

Lesní požáry

prof. Ing. Emanuel Kula, CSc.
Brno, 2013



INVESTICE DO ROZVOJE VZDĚLÁVÁNÍ

Tento projekt je spolufinancován Evropským sociálním fondem a Státním rozpočtem ČR InoBio – CZ.1.07/2.2.00/28.0018

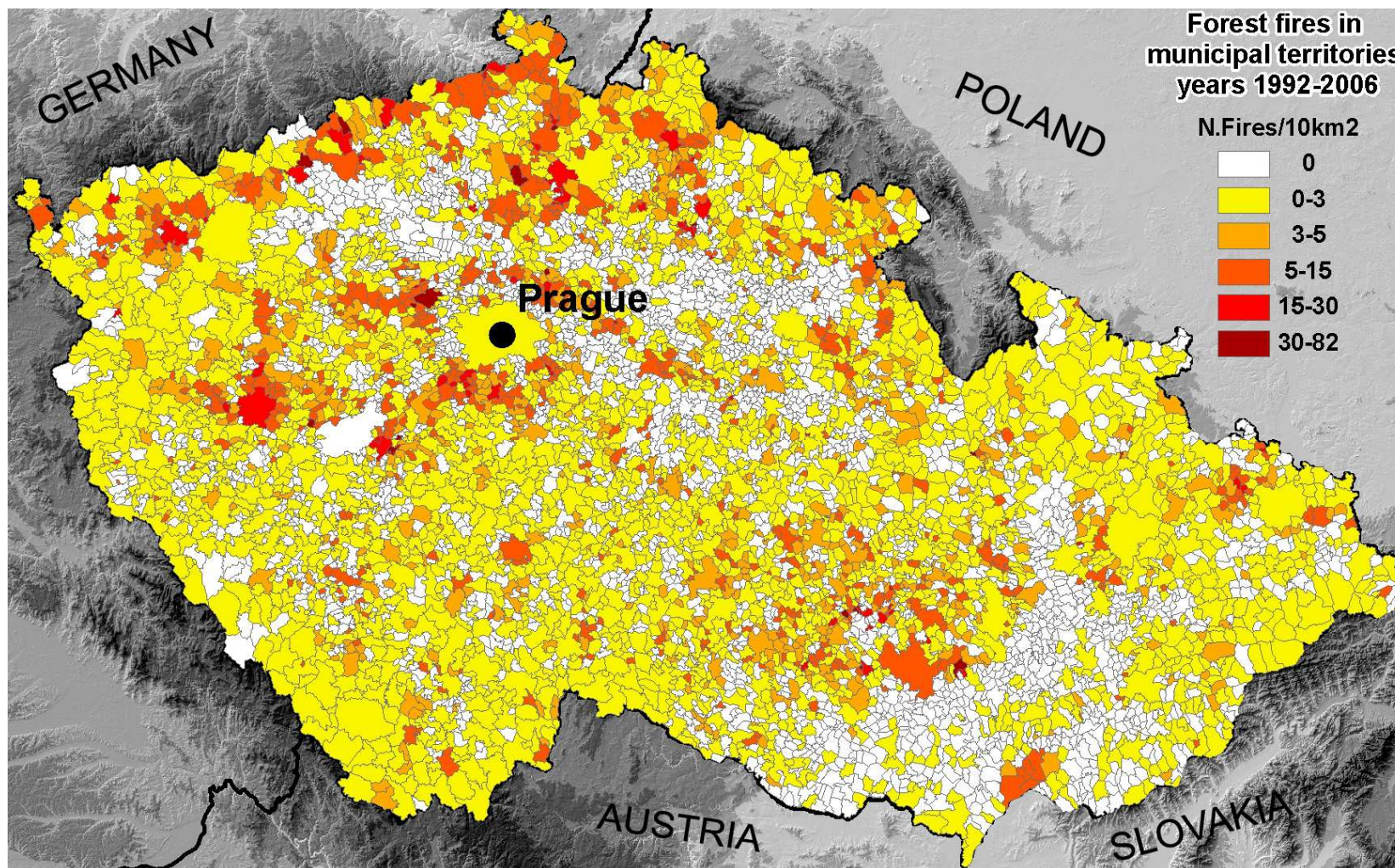


Fig. 0: Forest fires in municipal territories, years 1992–2006

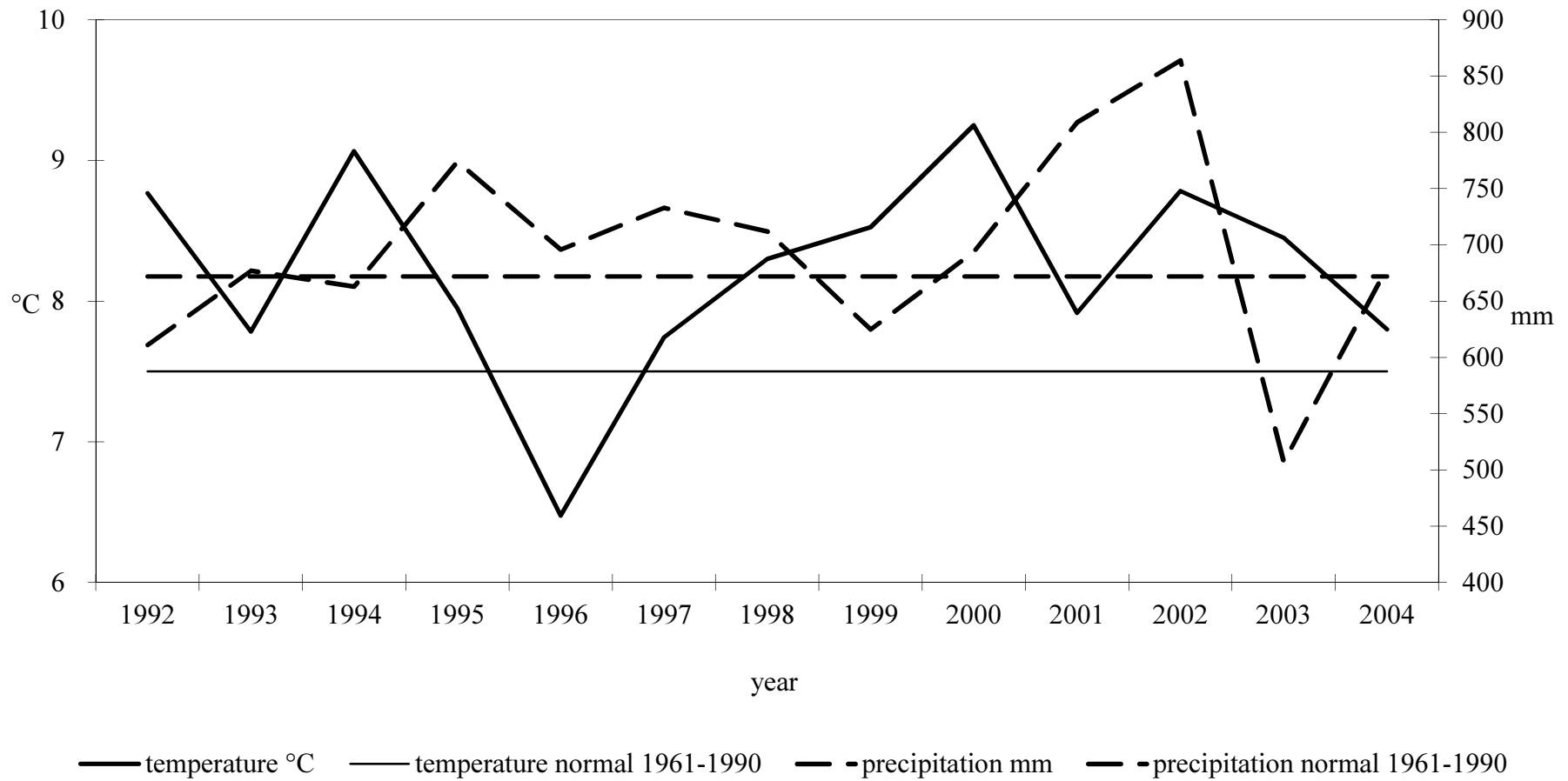


Fig. 1: Characteristics of the course of weather in the CR (1992–2004)

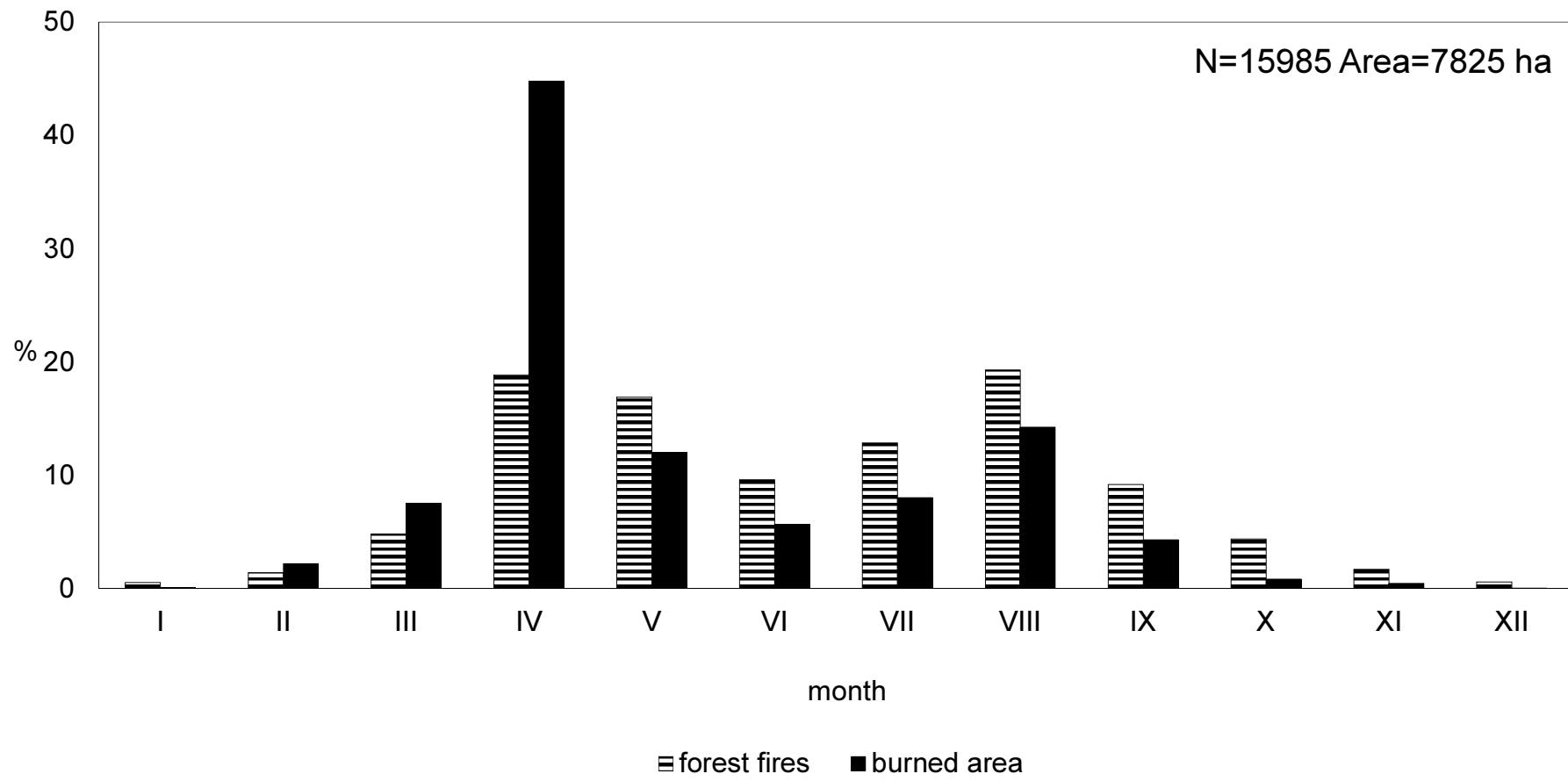


Fig. 2: Frequency and extent of forest fires during the year (1992–2004)

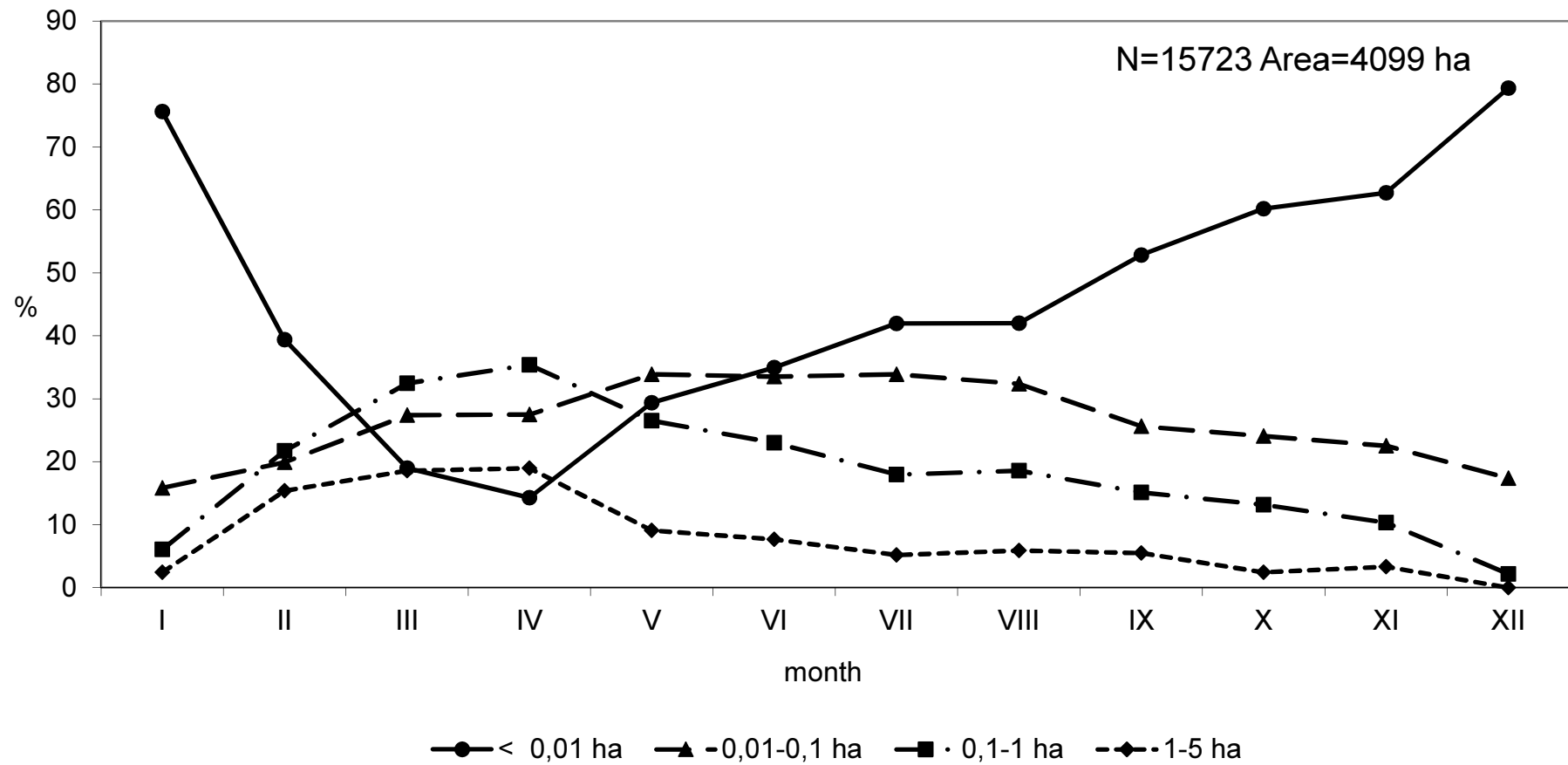


Fig. 3: Seasonal dynamics of forest fires depending on the extent of burnt area (1992–2004)

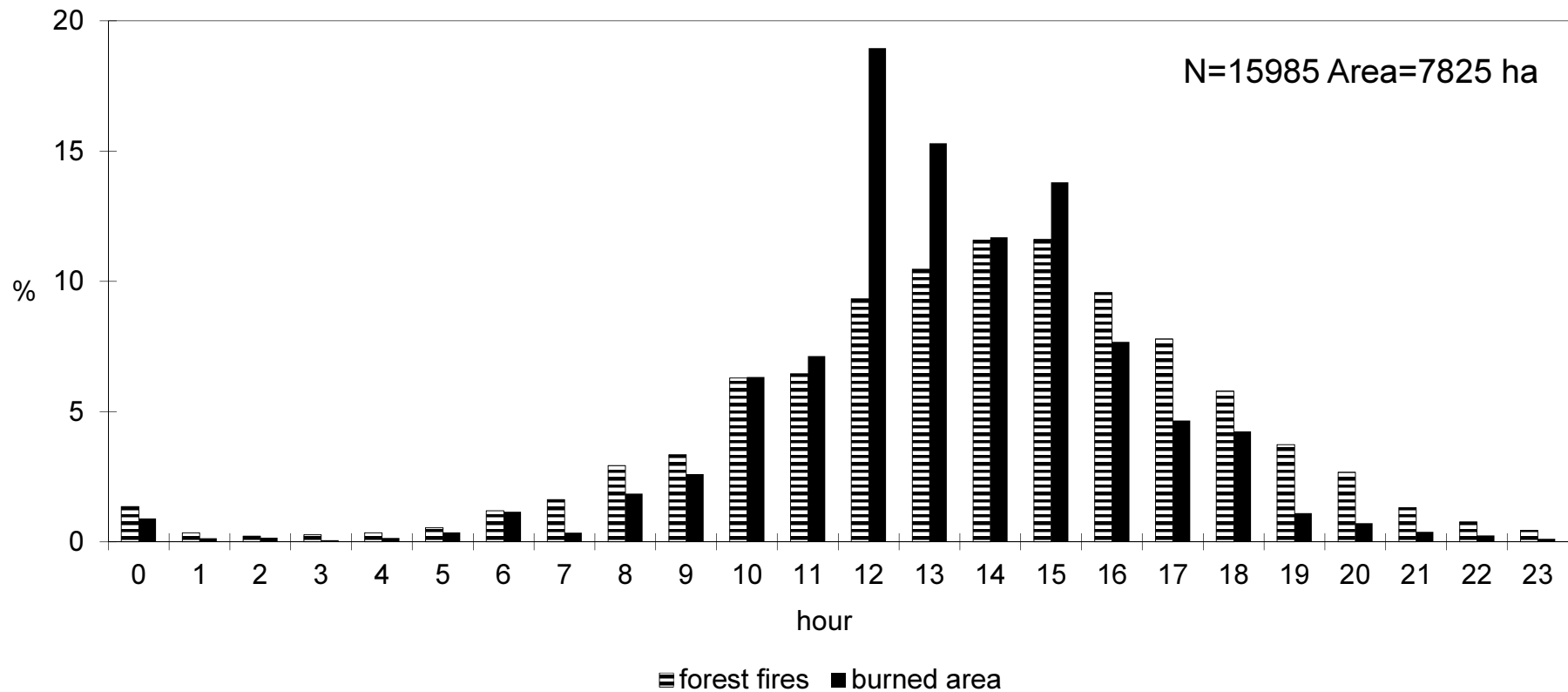


Fig. 4: Dynamics of the occurrence of forest fires in the CR during the day (1992–2004)

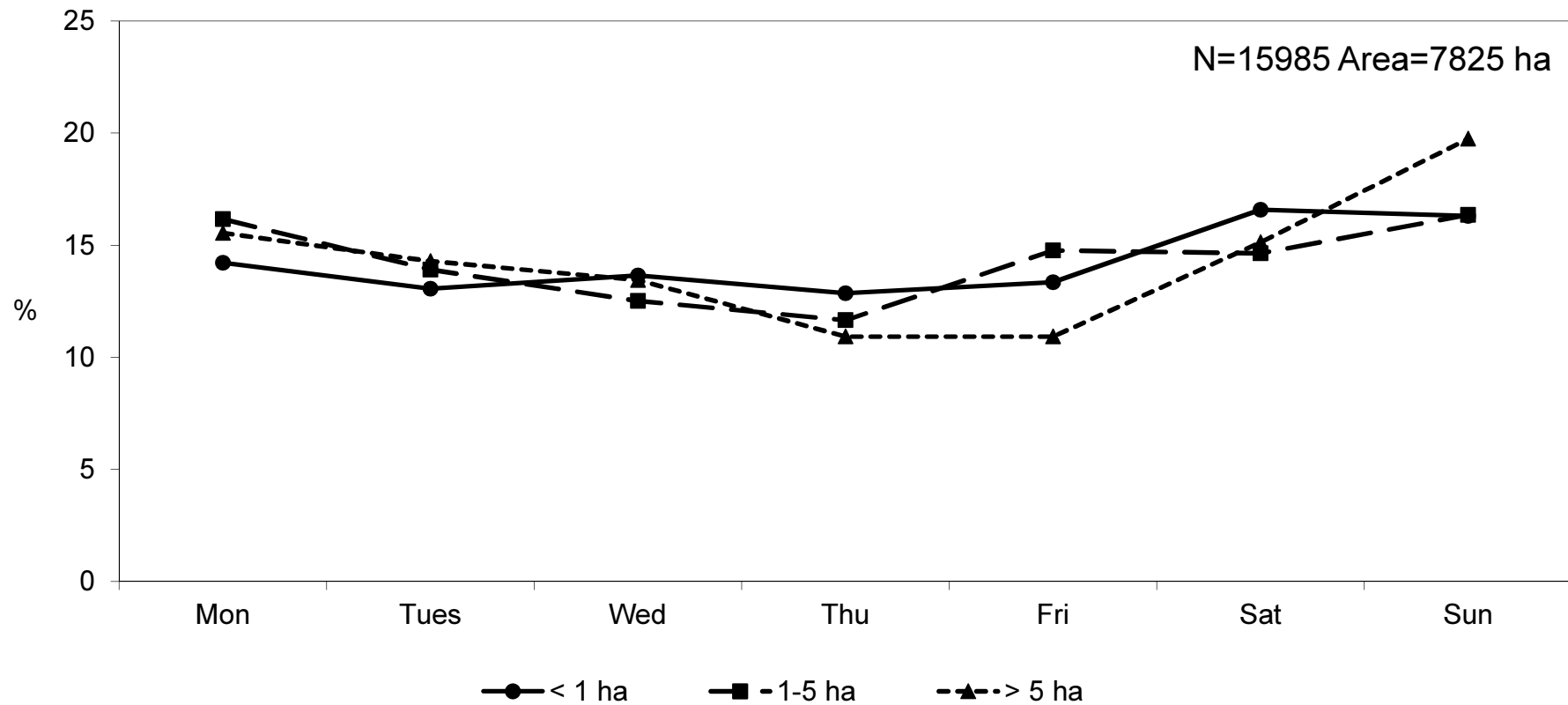


Fig. 5: Distribution of the total burnt forest area in the CR during the week (1992–2004)

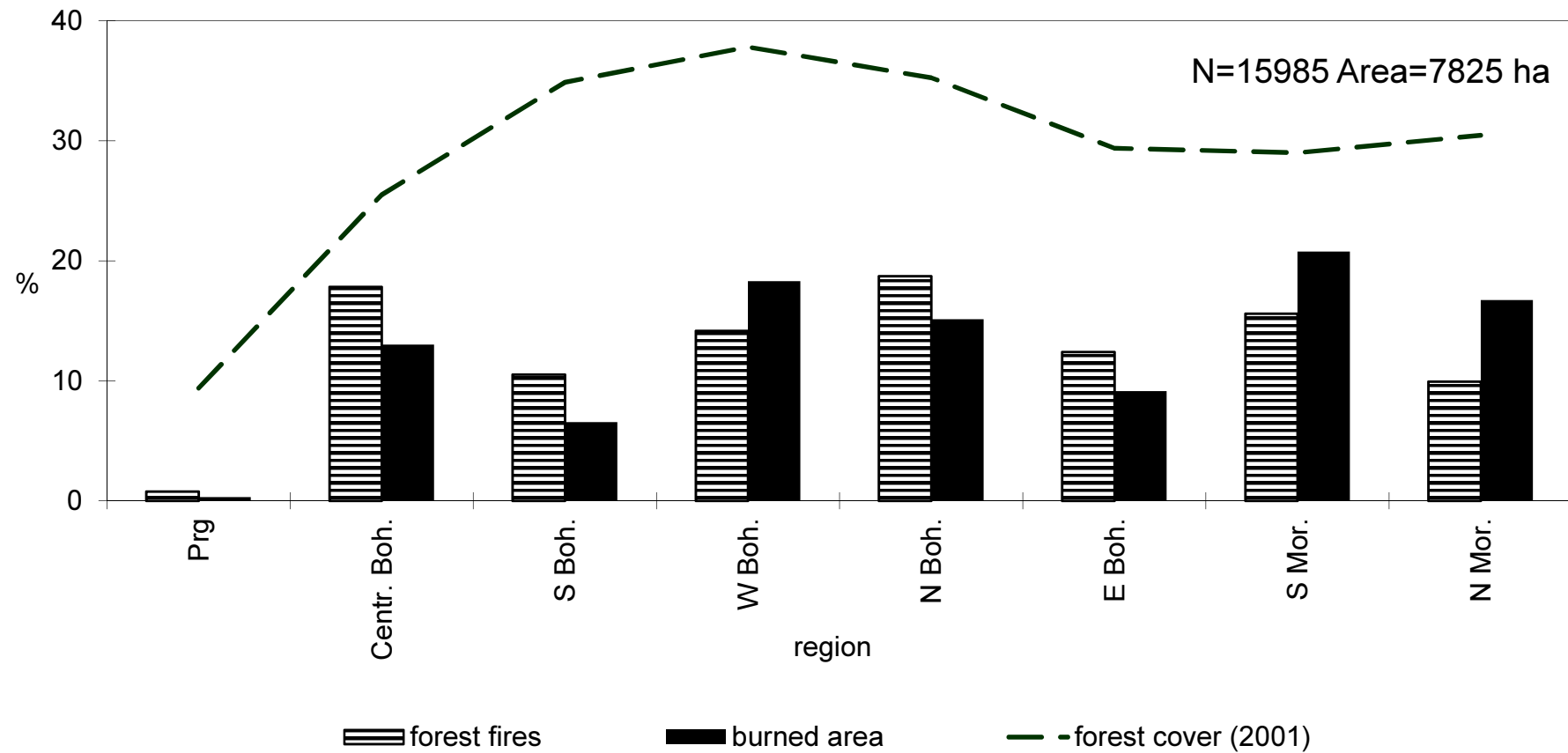


Fig. 6: The proportion of forest fires and burnt area according to regions of the CR and forest

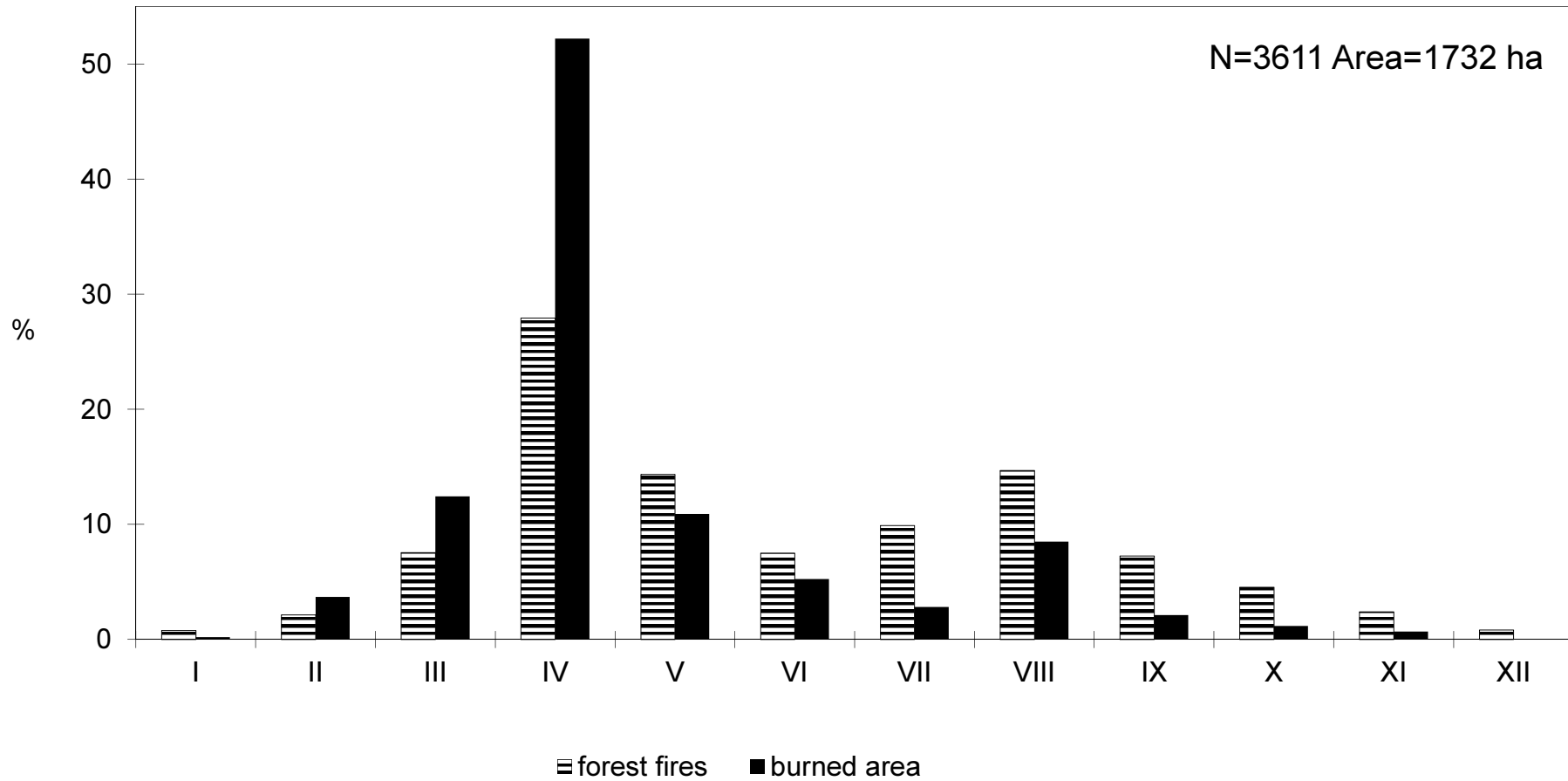


Fig. 9: The occurrence frequency and the extent of forest fires during the year in the CR (cause: fire raising; 1992–2004)

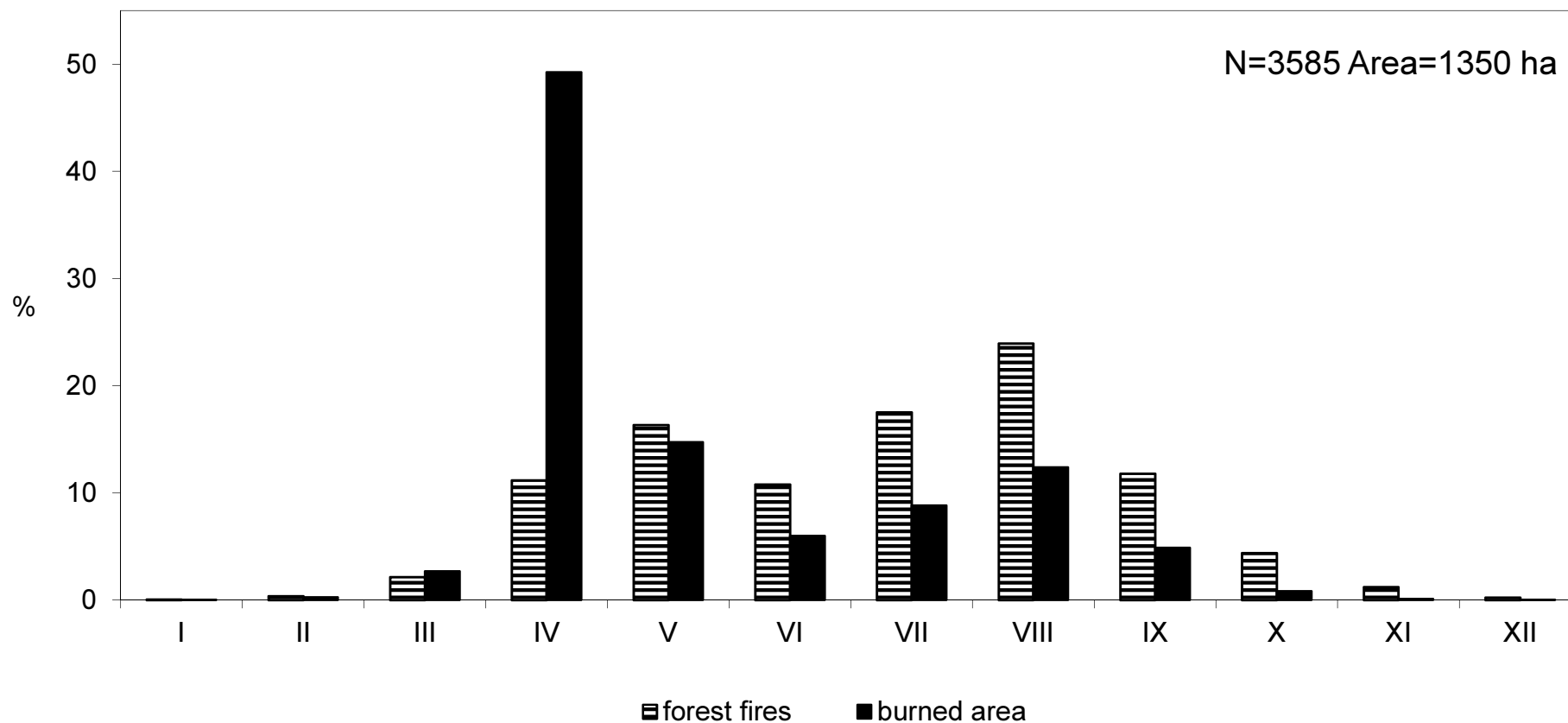


Fig. 12: The occurrence frequency and the extent of forest fires during the year in the CR (cause: smoking; 1992–2004)

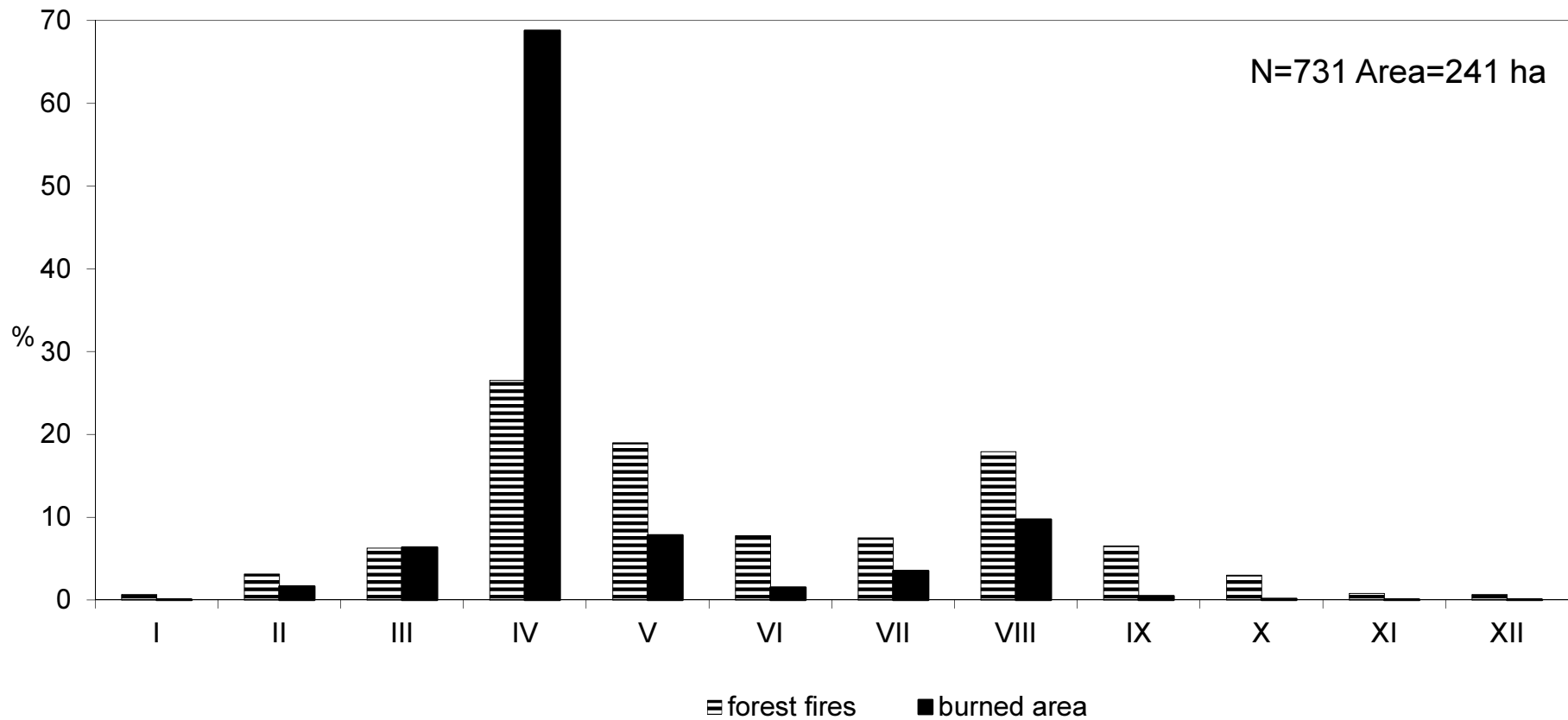


Fig. 13: The occurrence frequency and the extent of forest fires during the year in the CR (cause: children; 1992–2004)

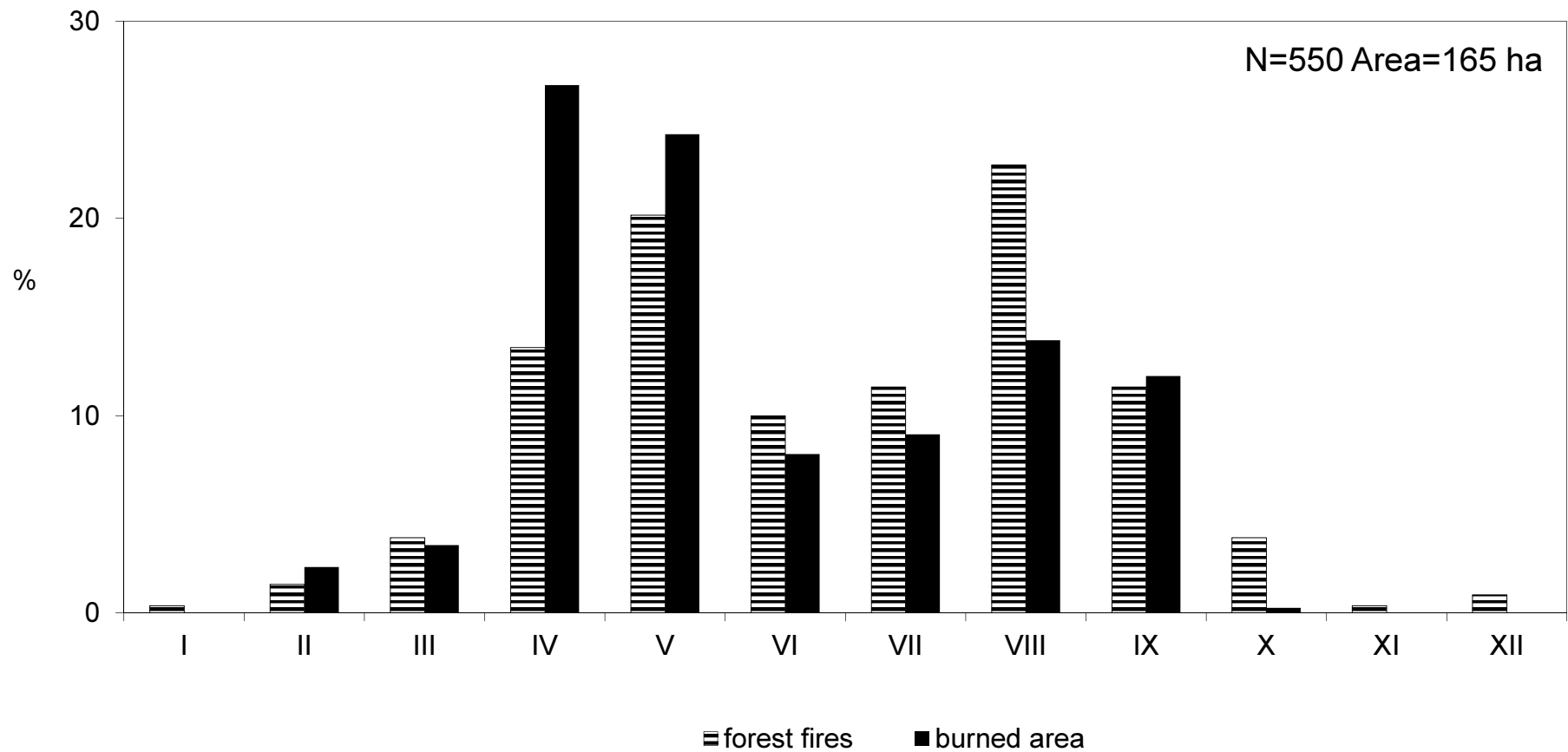


Fig. 15: The occurrence frequency and the extent of forest fires during the year in the CR (cause: arsonists; 1992–2004)

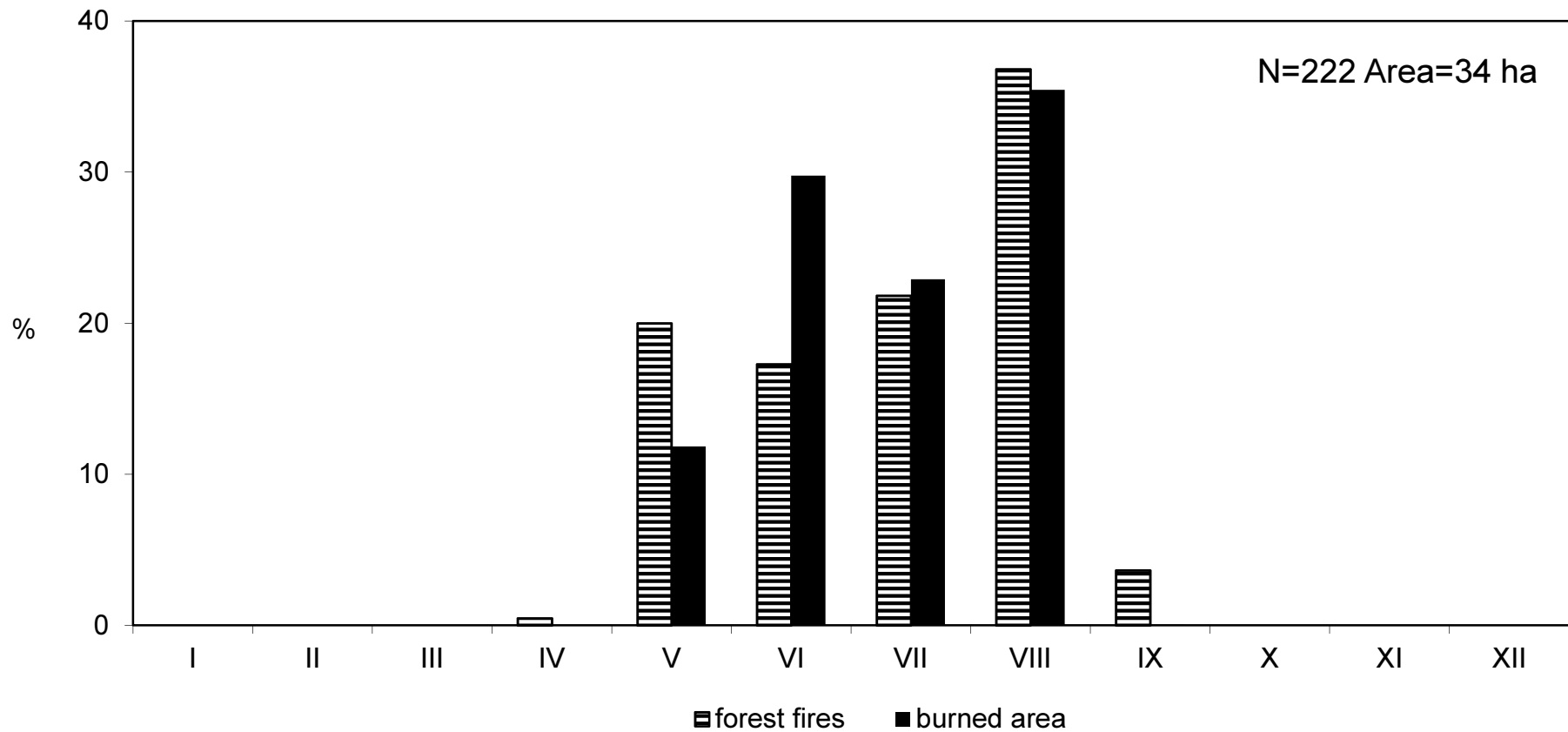


Fig. 16: The occurrence frequency and the extent of forest fires during the year in the CR (cause: lightning; 1992–2004)

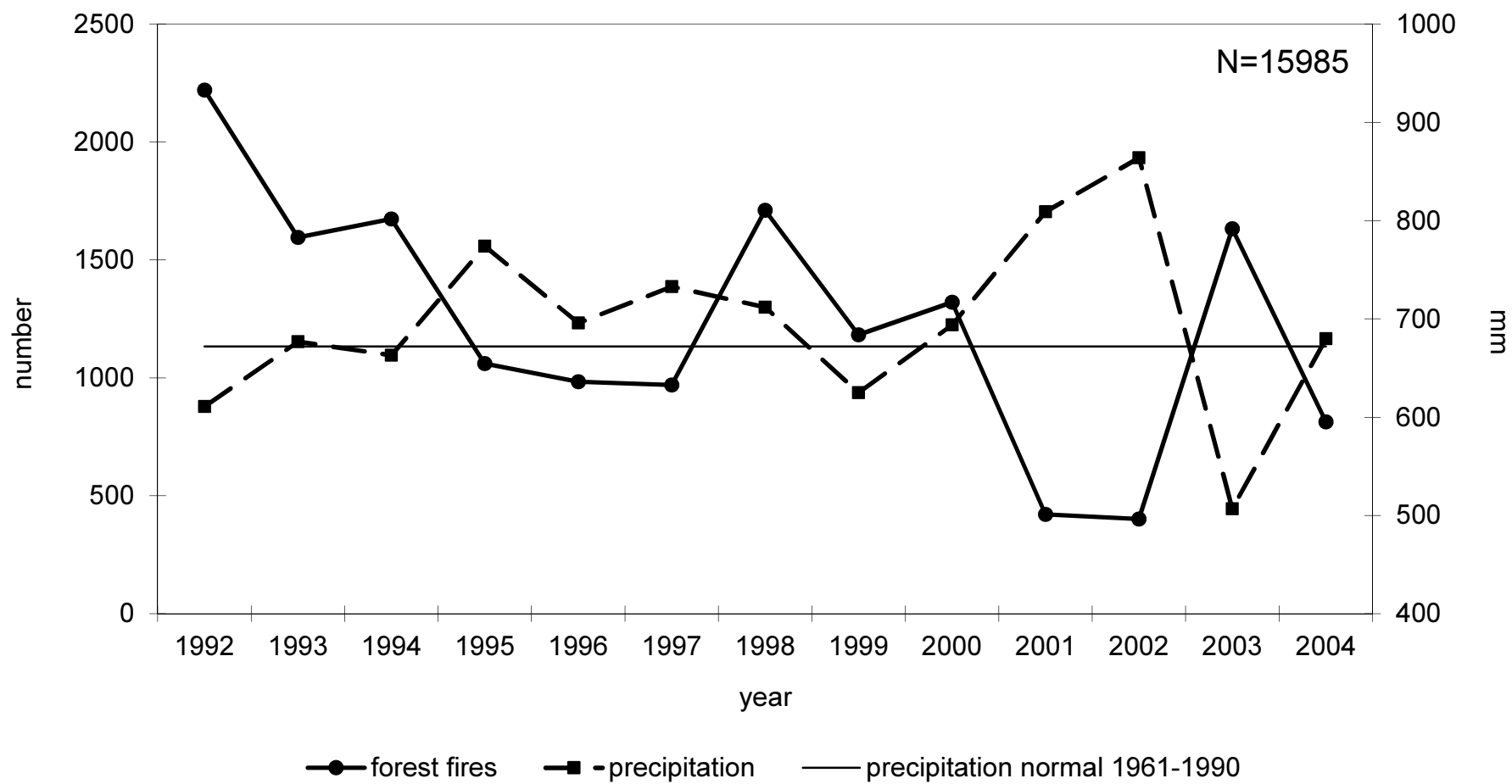


Fig. 17: The frequency of forest fires in the CR and average precipitation (1992–2004)

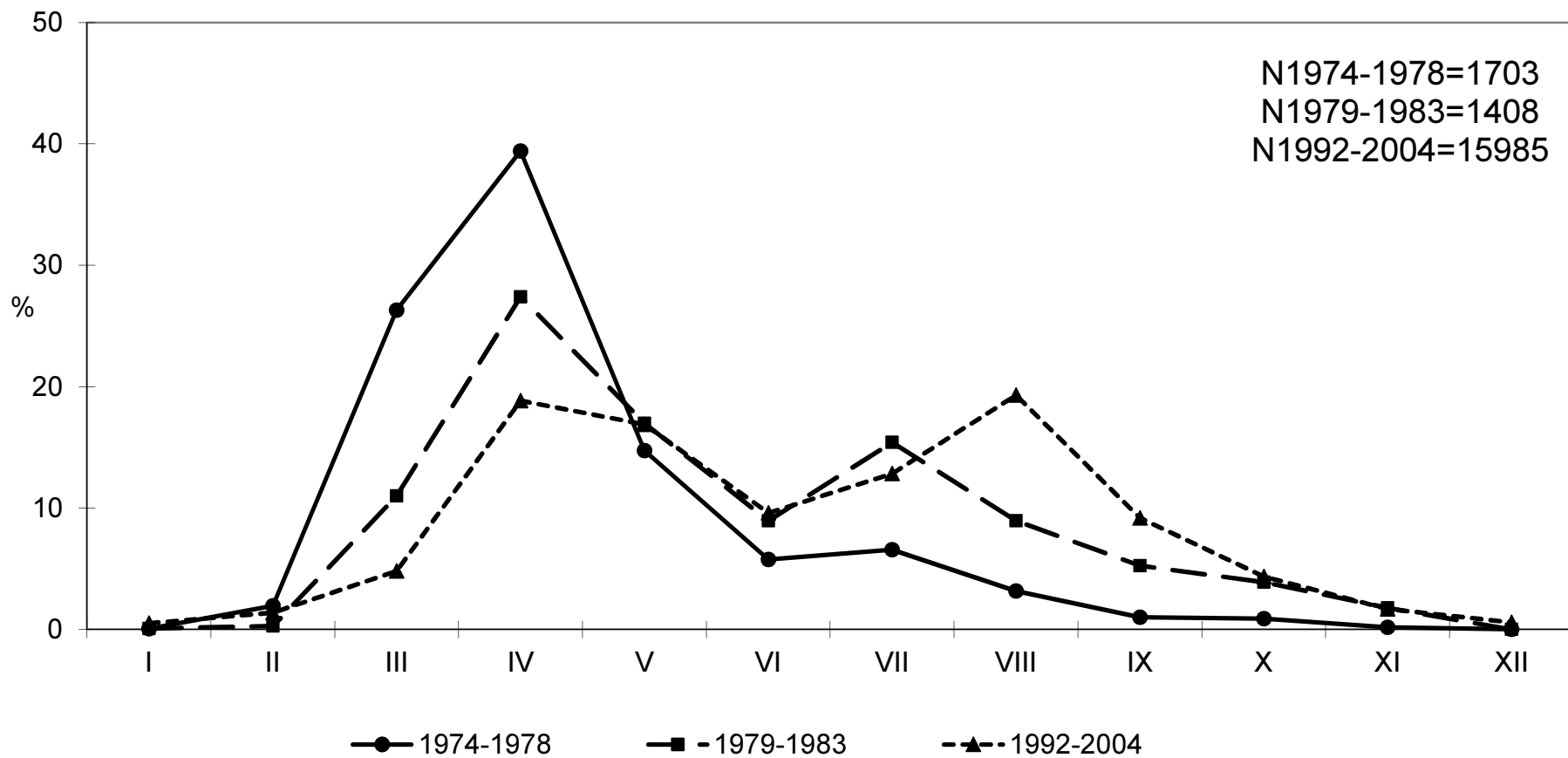


Fig. 18: The seasonal occurrence of forest fires in the CR (1974–2004)

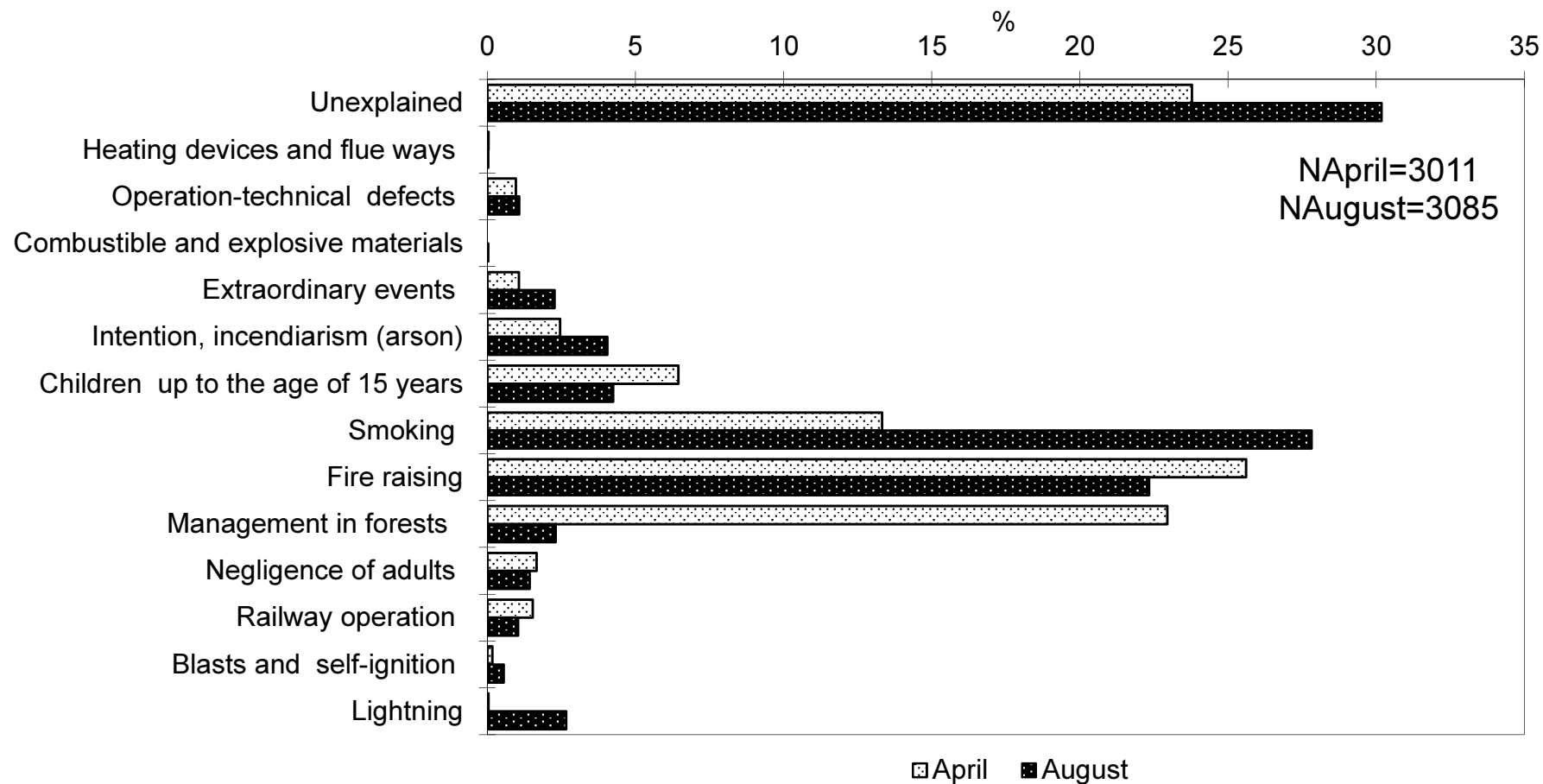


Fig. 19: Causes of the forest fire origin in the year culmination season (April, August 1992–2004)

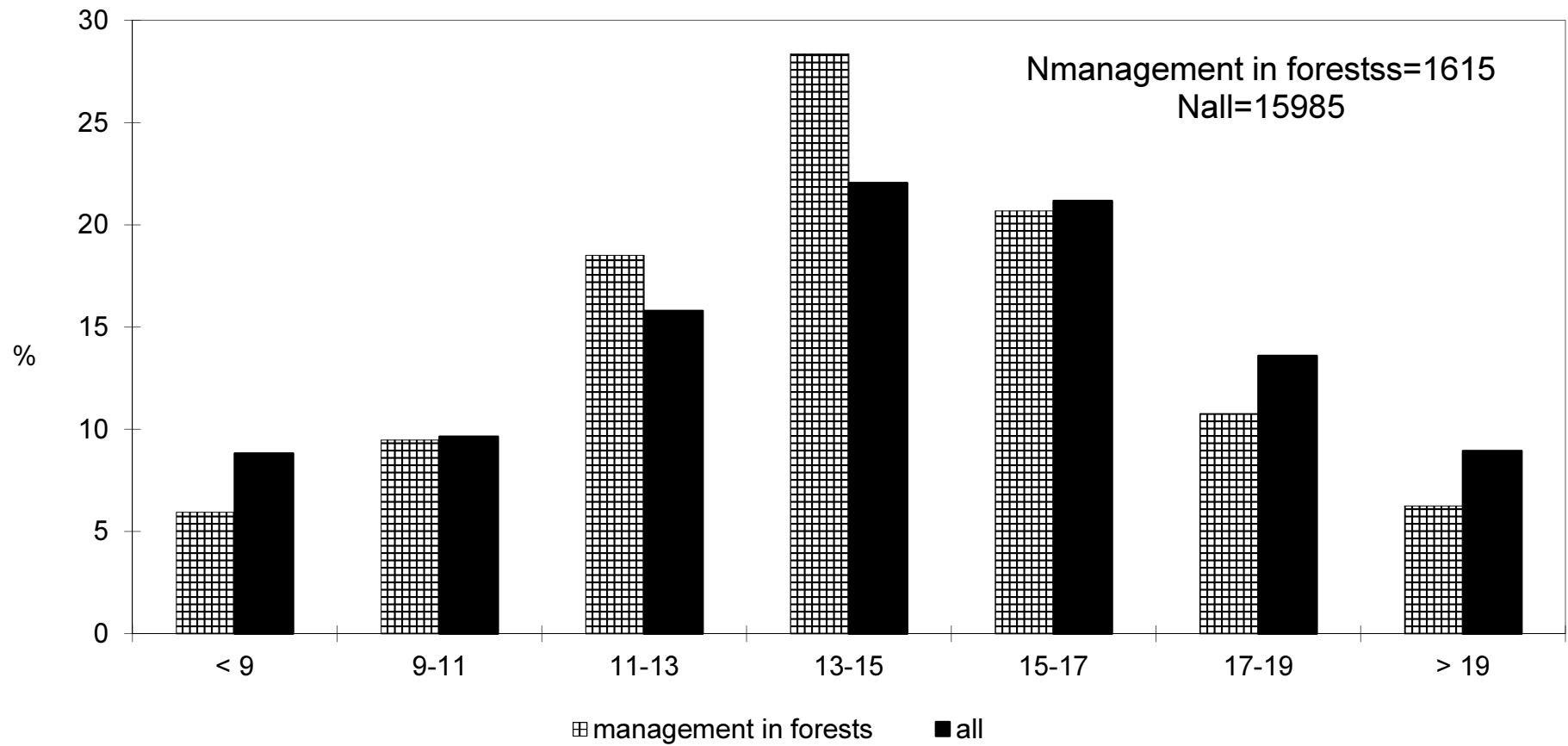


Fig. 20: The proportion of the forest management cause in forest fires in the CR (1992–2004)

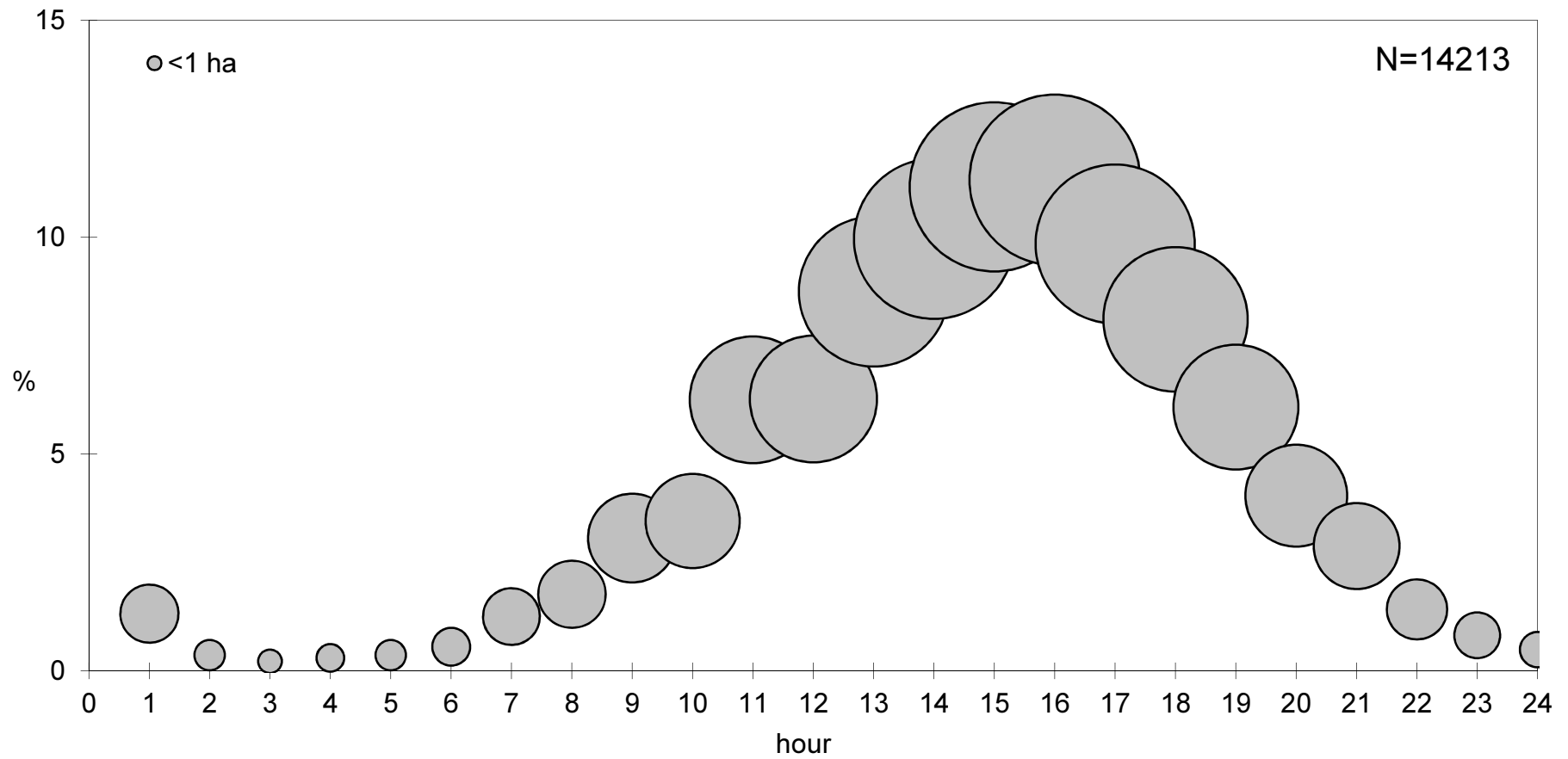


Fig. 21: The occurrence of forest fires of an area of <1 ha and >5 ha in the CR during the day (1992–2004)



Fig. 22: The occurrence frequency of forest fires in the CR during the day (1974–2004)

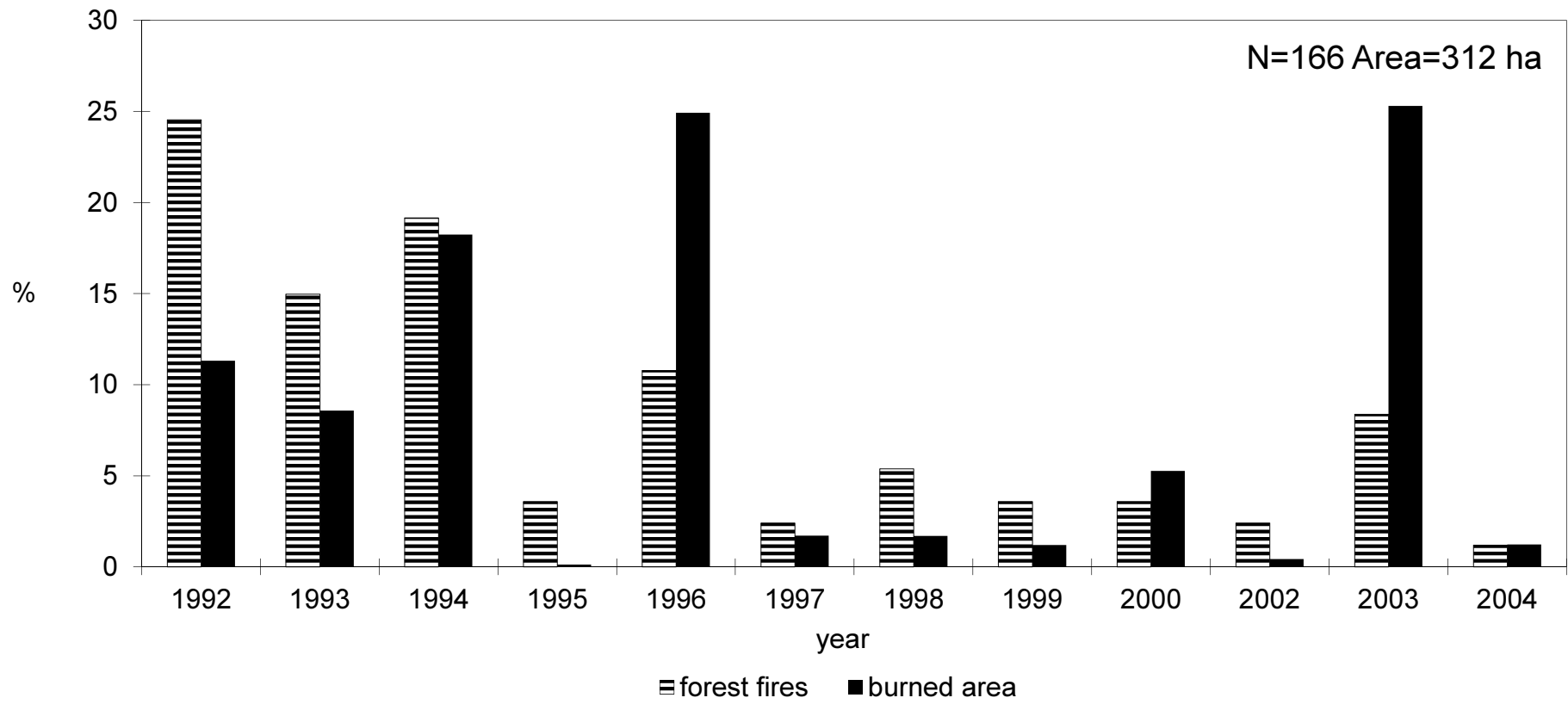


Fig. 23: The occurrence frequency of forest fires in the CR (cause: railway operation; 1992–2004)

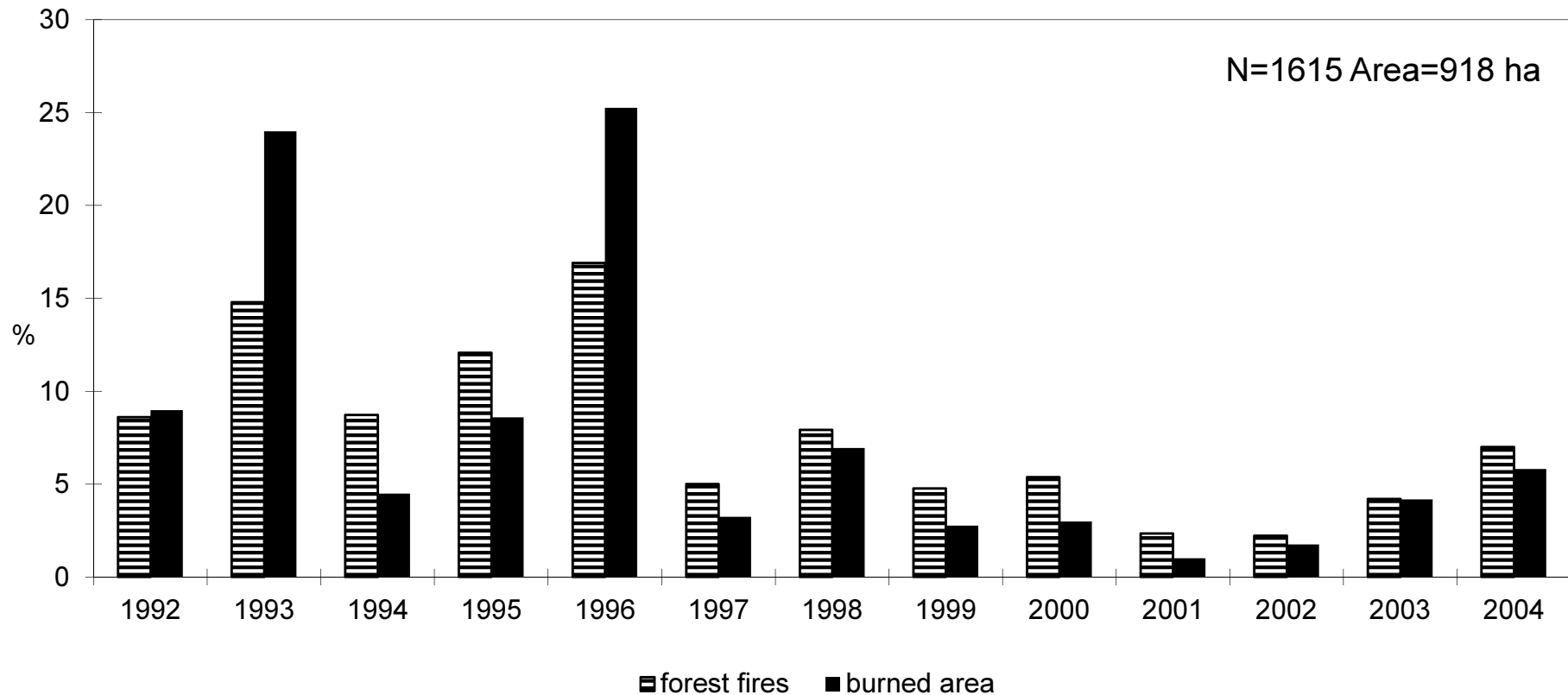


Fig. 24: The occurrence frequency and the extent of forest fires during the year in the CR (cause: management in forests; 1992–2004)

Years	1992	1993	1994	1995	1996	1997	1998	1999	2000	2001	2002	2003	2004	Total
Forest fires	2220	1595	1674	1061	984	970	1710	1183	1320	421	402	1632	813	15985
%	13,9	10	10,5	6,6	6,2	6,1	10,7	7,4	8,3	2,6	2,5	10,2	5,1	100
Burned area (ha)	1144	1041	667	363	1714	260	786	276	352	71	127	731	294	7825
%	14,6	13,3	8,5	4,6	21,9	3,3	10,1	3,5	4,5	0,9	1,6	9,3	3,8	100
ha/fire	0,52	0,65	0,4	0,34	1,74	0,27	0,46	0,23	0,27	0,17	0,32	0,45	0,36	0,49

Tab. 1: The frequency of forest fires and the extent of burnt area in the CR (1992–2004)

Causes	N	%	ha	%	ha/fire
Unexplained	4778	29,89	2603,71	33,28	0,54
Heating devices and flue ways	9	0,06	0,6	0,01	0,07
Operation-technical defects	133	0,83	159,99	2,04	1,2
Combustible and explosive materials	2	0,01	0,31	0	0,15
Extraordinary events	230	1,44	113,5	1,45	0,49
Intention, incendiarism (arson)	550	3,44	165,22	2,11	0,3
Children up to the age of 15 years	731	4,57	240,67	3,08	0,33
Smoking	3585	22,43	1350,44	17,26	0,38
Fire raising	3611	22,59	1731,99	22,13	0,48
Management in forests	1615	10,1	917,69	11,73	0,57
Negligence of adults	288	1,8	151,84	1,94	0,53
Railway operation	166	1,04	311,94	3,99	1,88
Blasts and self-ignition	65	0,41	42,52	0,54	0,65
Lightning	222	1,39	34,4	0,44	0,15
Sum	15985	100	7824,79	100	0,49

Tab. 2: Causes of forest fires and the extent of burnt area in the CR (1992–2004)

- Děkuji za pozornost