

Determination of fungal species by conidia

Fungi form spores called conidia during asexual reproduction. They are non motile, produced on the tip or on side of conidiophores. Conidia and conidiophores have characteristic shape for particular genus and species. They can be also arranged to several structures – acervulus, sporodochium, pycnidium.



Oidium spp.



Oidium spp.



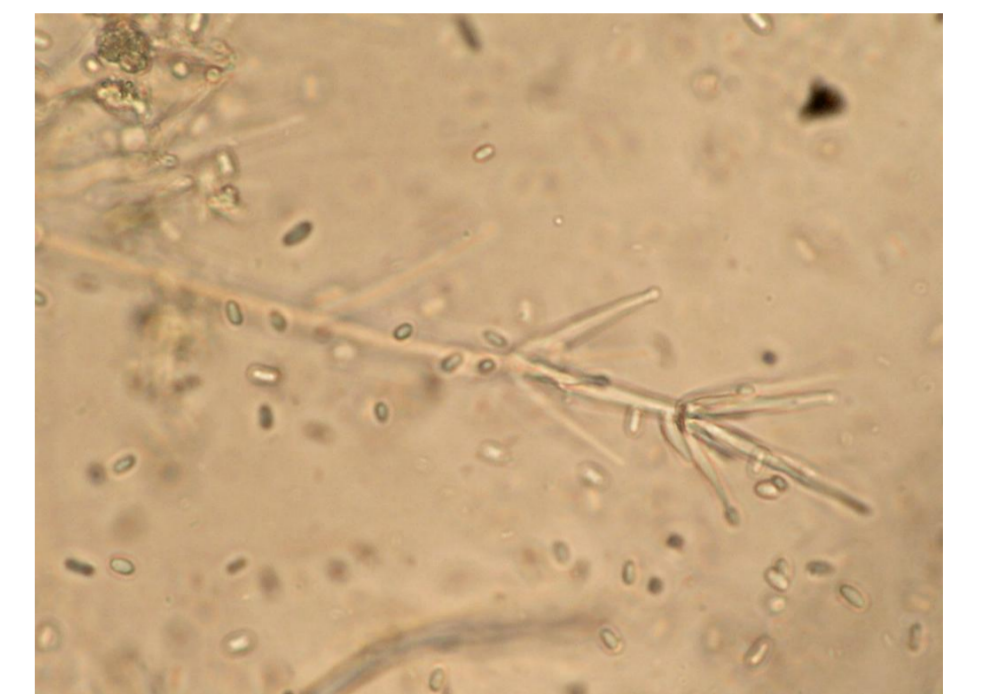
Monilia spp.



Penicillium spp.



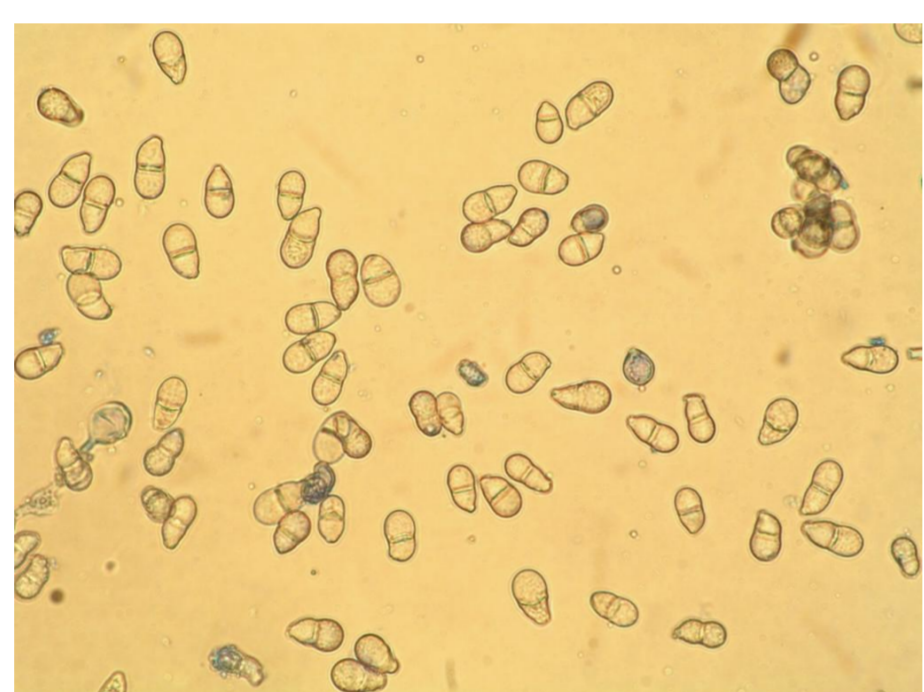
Verticillium spp.



Verticillium spp.



Rhynchosporium secalis



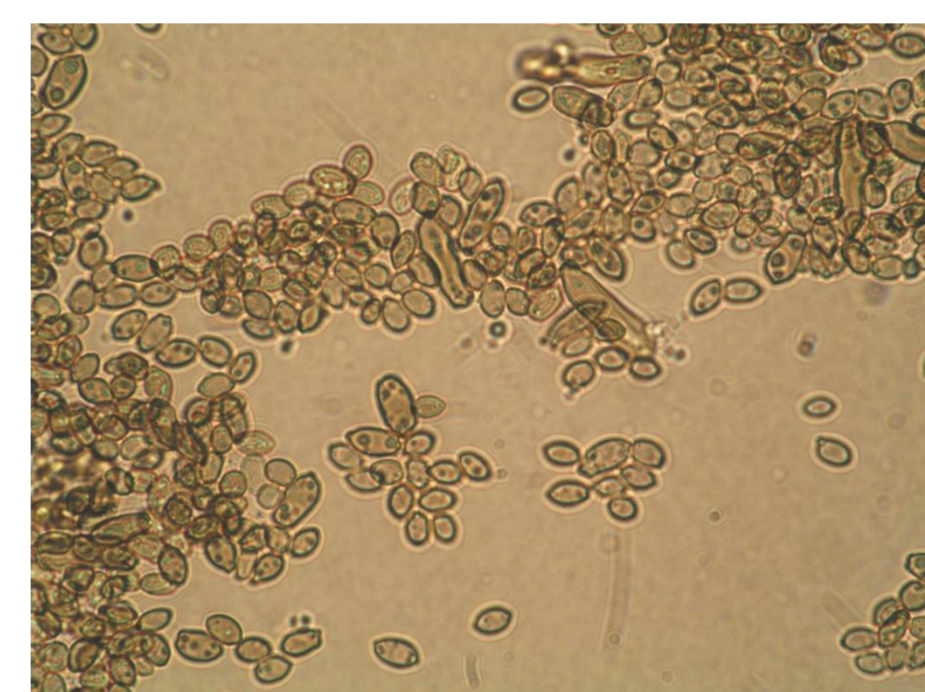
Trichothecium roseum



Ramularia spp.



Cladosporium spp.



Cladosporium spp.



Botrytis spp.



Spilocea pomi



Bipolaris sorokiniana



Bipolaris sorokiniana



Drechslera spp.



Alternaria spp.



Alternaria spp.



Alternaria brassicae



Stemphylium spp.



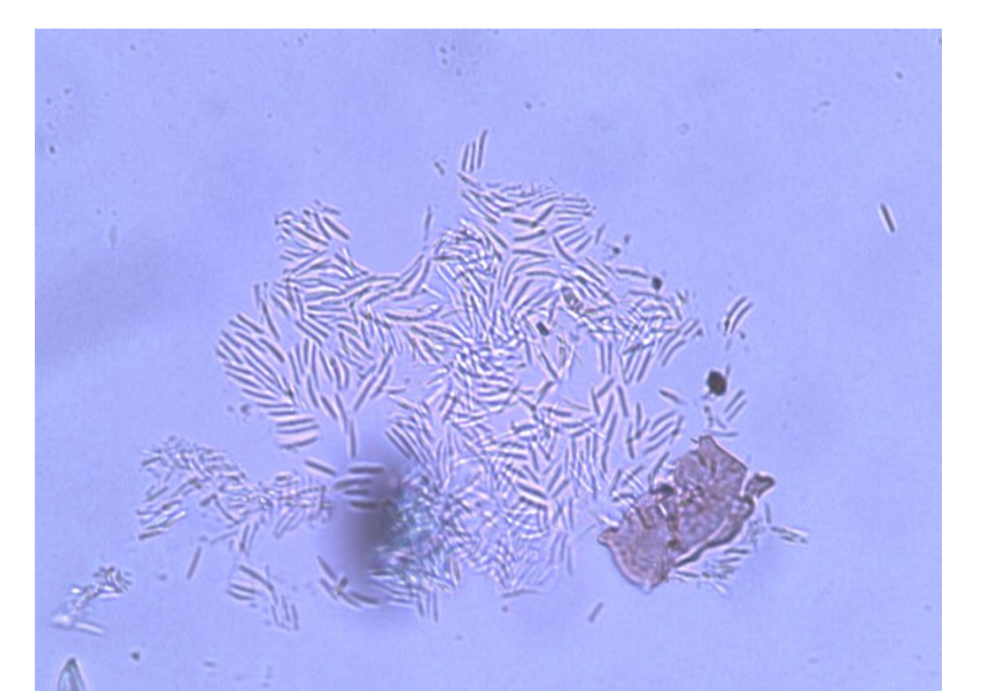
acervulus



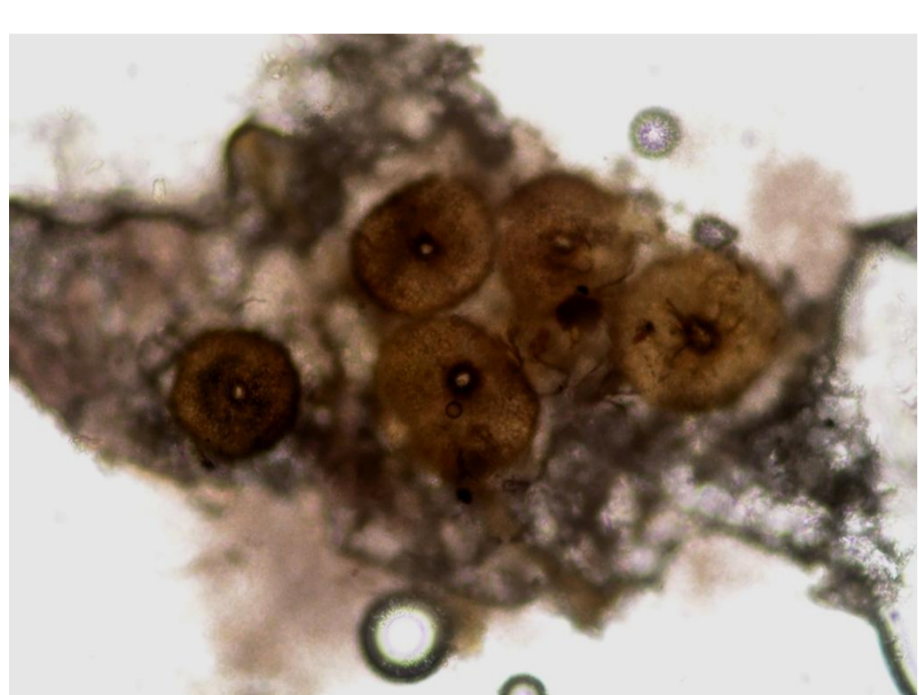
Colletotrichum acutatum



Colletotrichum acutatum



Marssonina juglandis



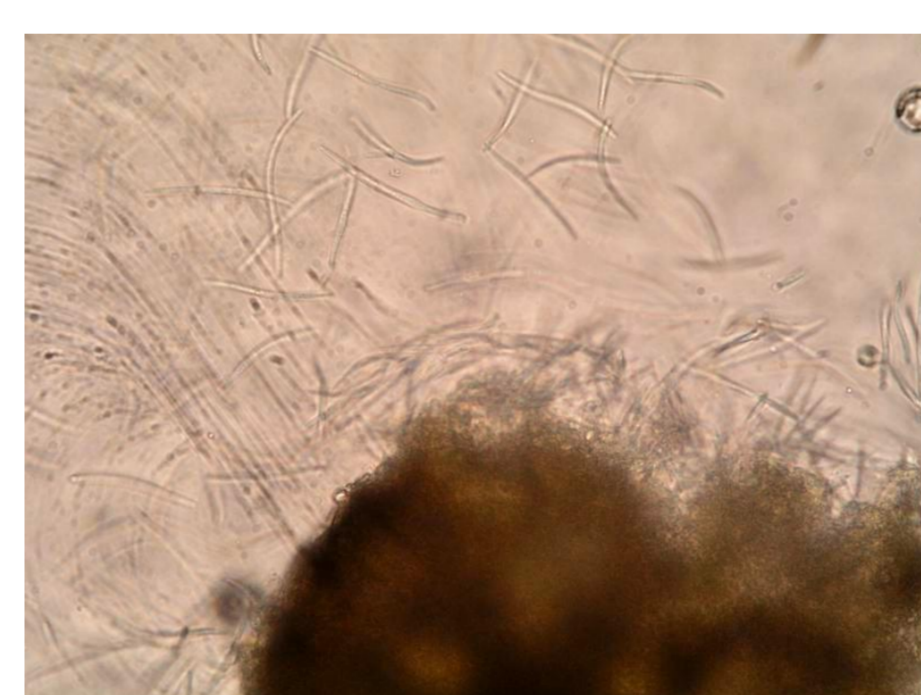
pycnidia



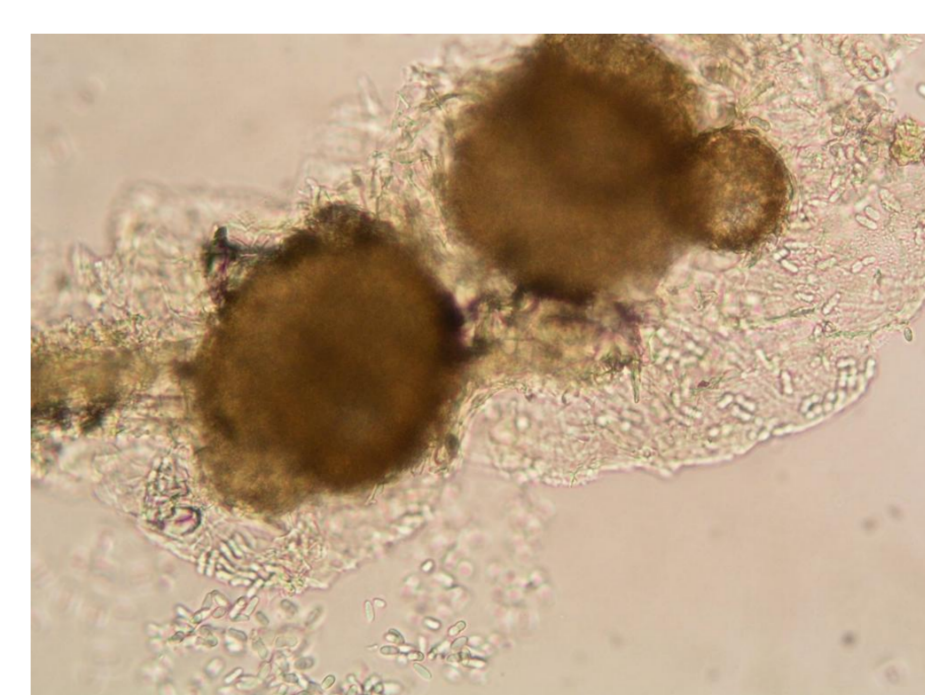
Phoma lingam



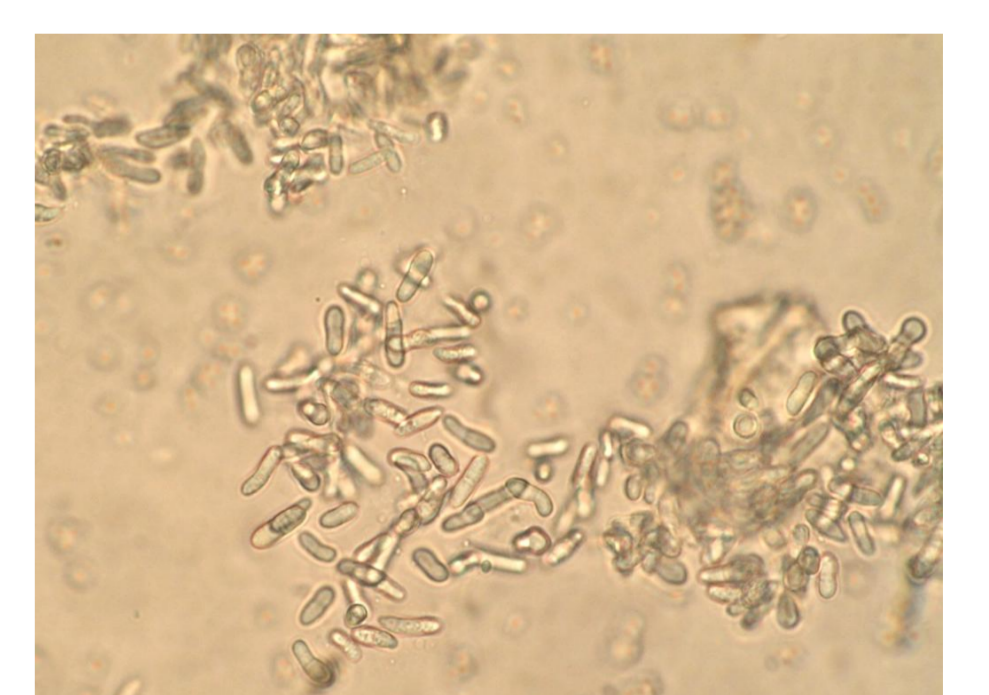
Phoma lingam



Septoria apiicola



Ascochyta pisi



Ascochyta pisi



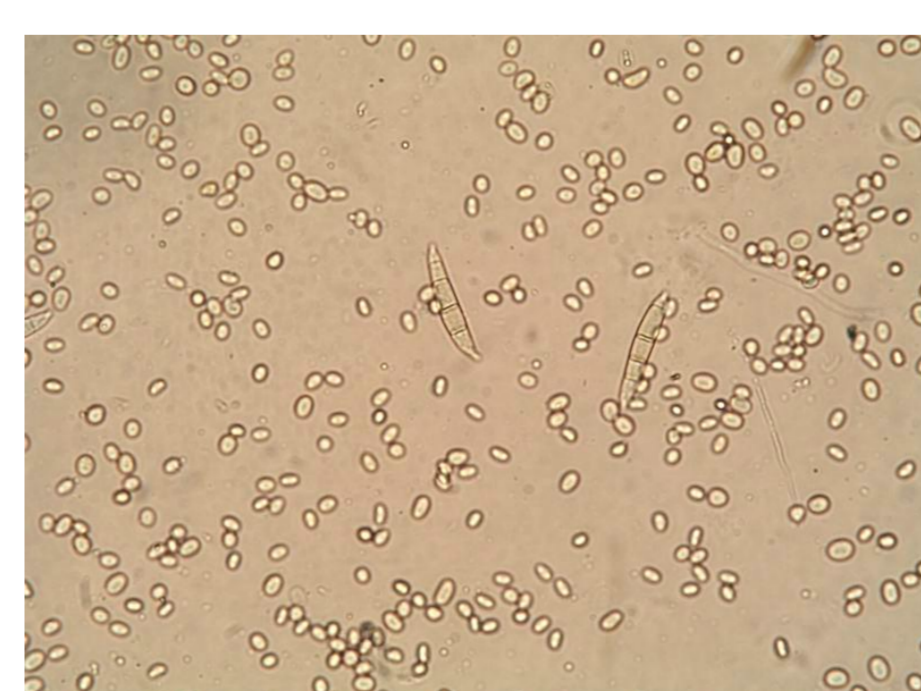
sporodochium



Fusarium spp.



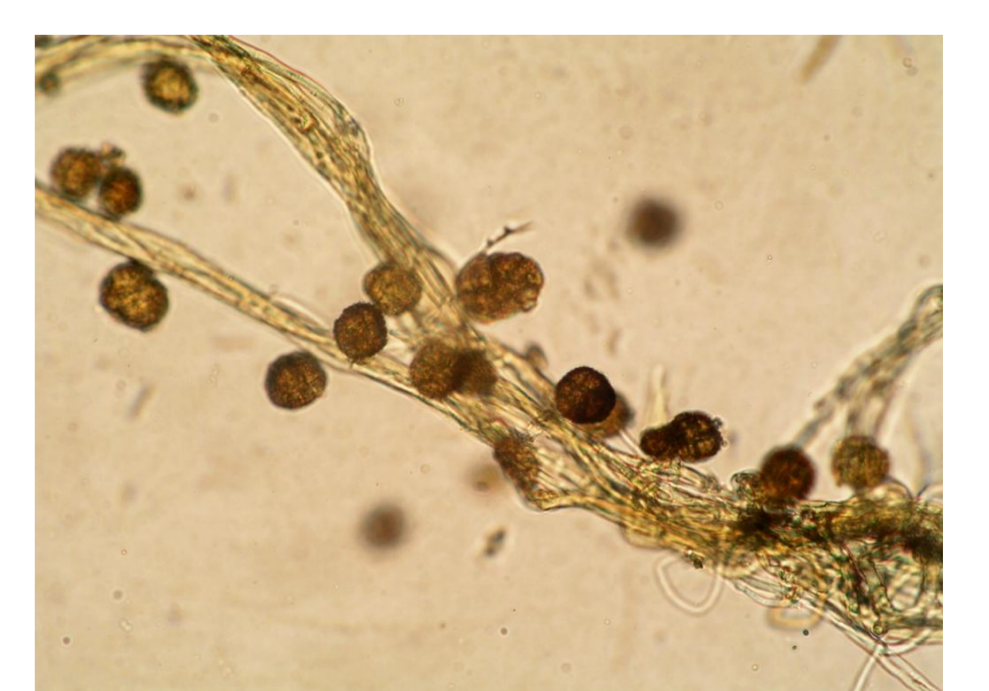
Fusarium spp.



Fusarium spp.



Fusarium spp.



Epicoccum nigrum

author: Jana Víchová
Mendel University in Brno