

SPOLEČNĚ PRO VÝZKUM, ROZVOJ A INOVACE
CZ/FMP.17A/0436



ASTROBIOLOGIE: Živočišný život v chemoautotrofním ekosystému podzemní kavity Ayyalon

René Kizek

23.4.2015,

Laboratoř metalomiky a nanotechnologií, Mendelova univerzita v Brně, Zemědělská 1, Brno
Místnost CEITEC, Kontakt: kizek@sci.muni.cz



FOND MIKROPROJEKTŮ



Die Lage der Ajalon-Höhle in Israel. Etwa von Karmel nach Be'er Scheva verläuft der Yarkon-Taninim-Aquifer



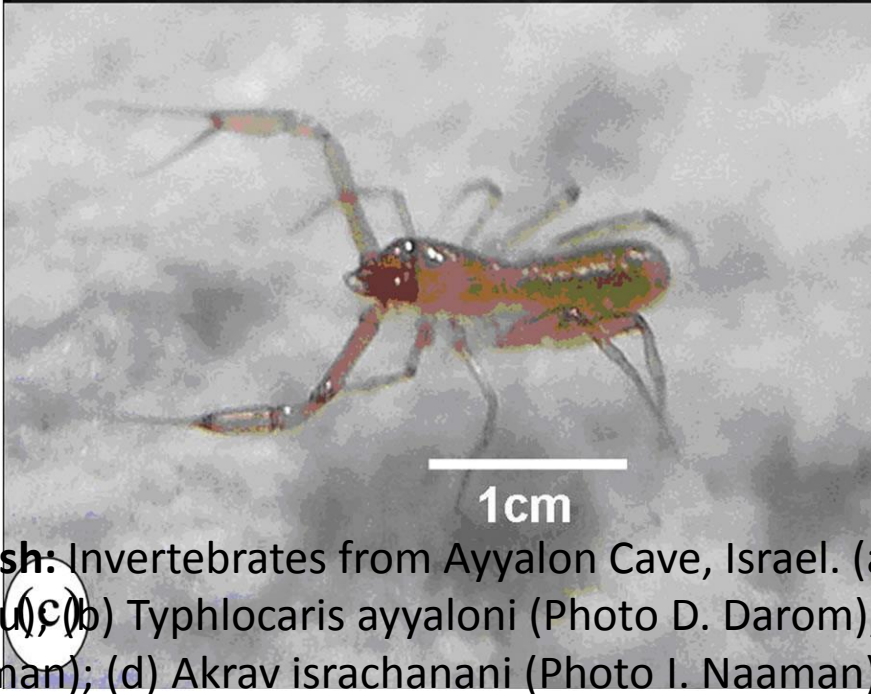
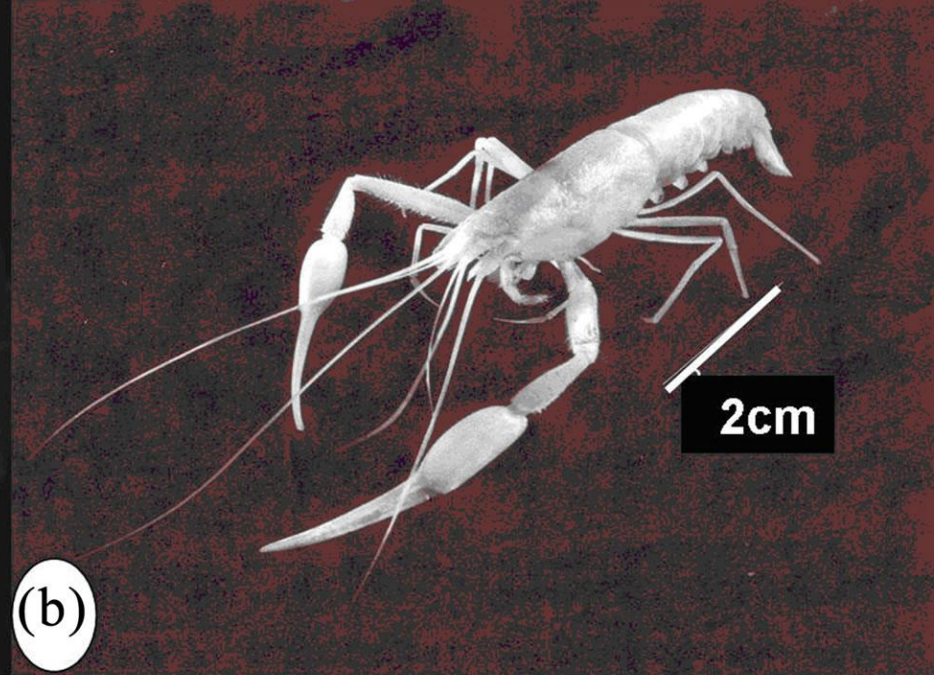
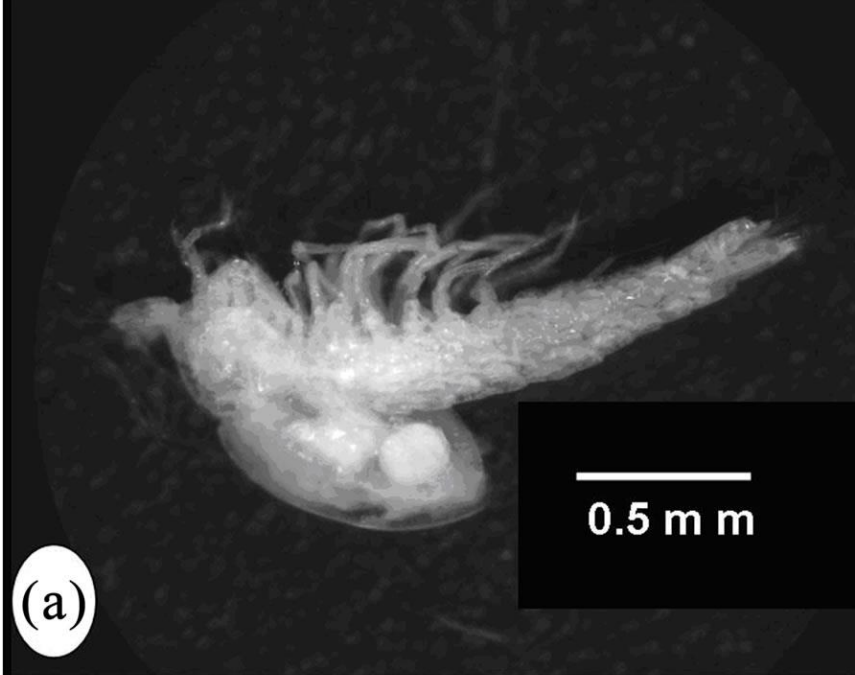
PROGRAM
CEZHRANIČNEJ
SPOLUPRÁCE
SLOVENSKÁ REPUBLIKA
ČESKÁ REPUBLIKA



EURÓPSKA ÚNIA
EURÓPSKY FOND
REGIONÁLNEHO ROZVOJA
SPOLOČNE BEZ HRANÍC



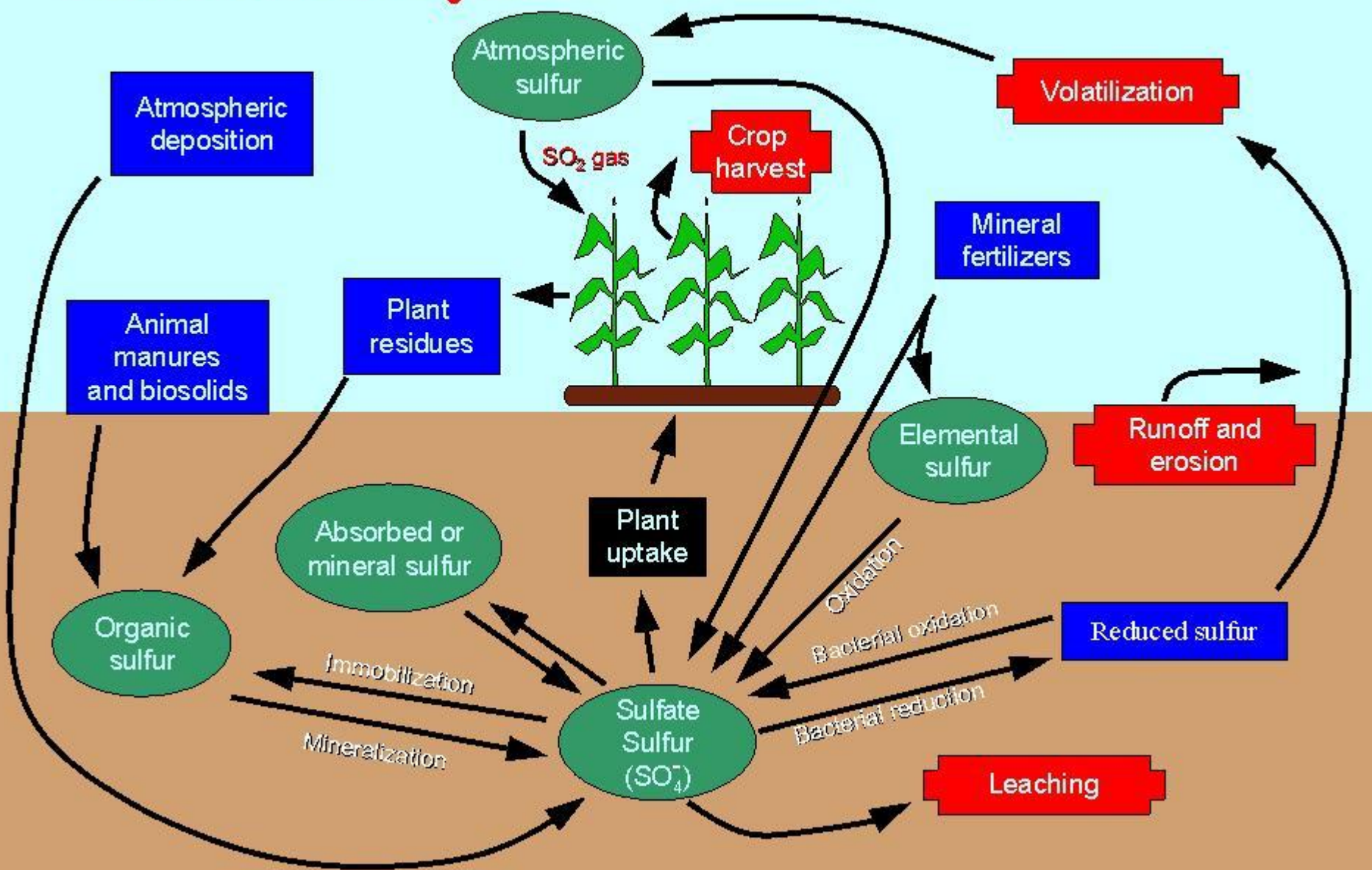
FOND MIKROPROJEKTŮ



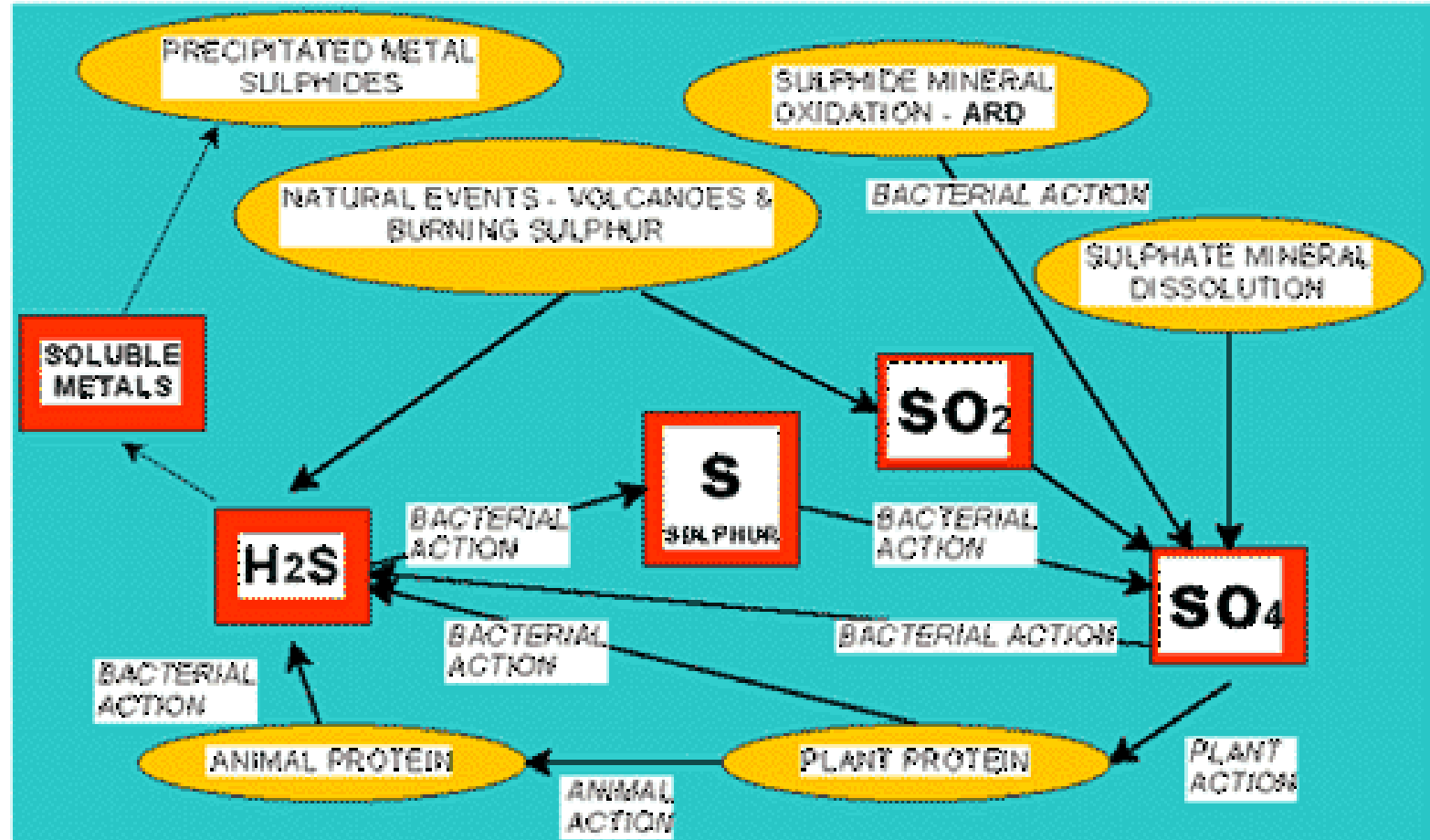
English: Invertebrates from Ayyalon Cave, Israel. (a) *Tethysbaena ophelicola* (Photo N. Ben Eliahu); (b) *Typhlocaris ayyaloni* (Photo D. Darom); (c) *Ayyalonia dimentmani* (Photo I. Naaman); (d) *Akrav israchanani* (Photo I. Naaman)

The Sulfur Cycle

Component Input to soil Loss from soil



SIMPLIFIED SULPHUR CYCLE FOR MINERAL DEPOSITS



Dorsal and ventral view of specimen of *Excorallana* sp., photographed by [Artour A.](#)



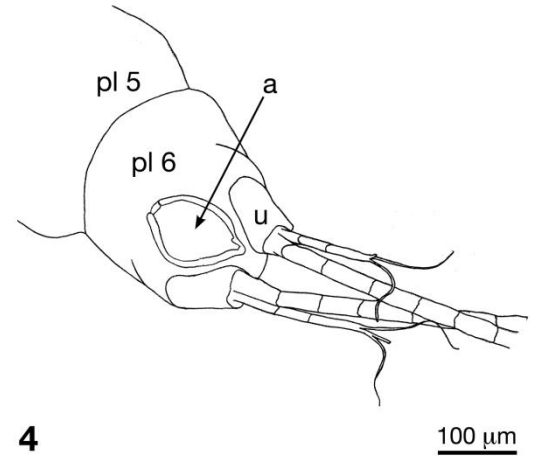
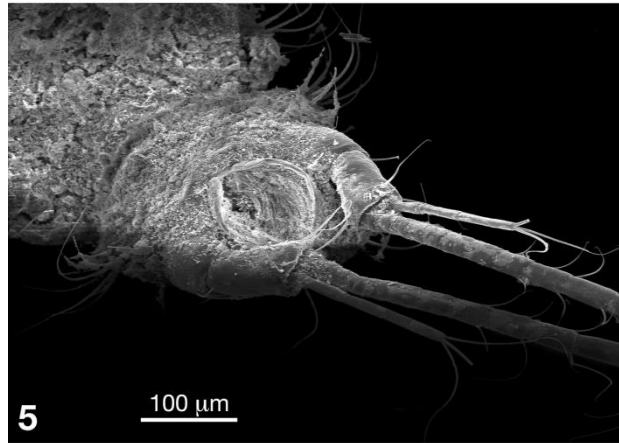
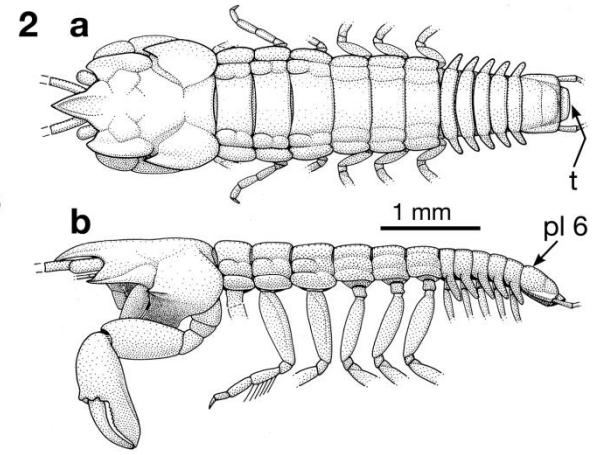
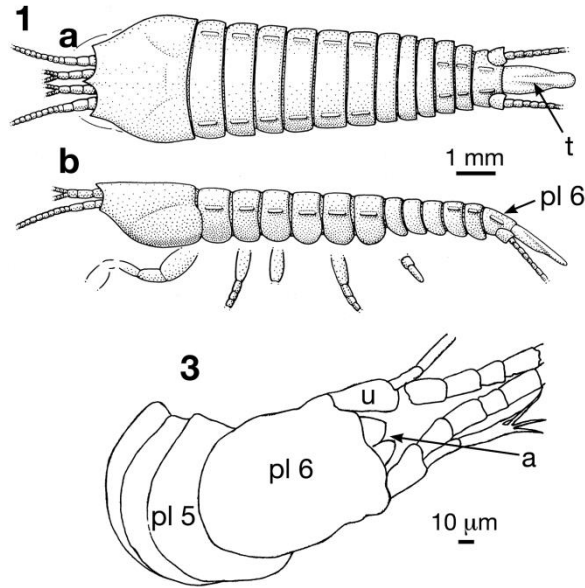
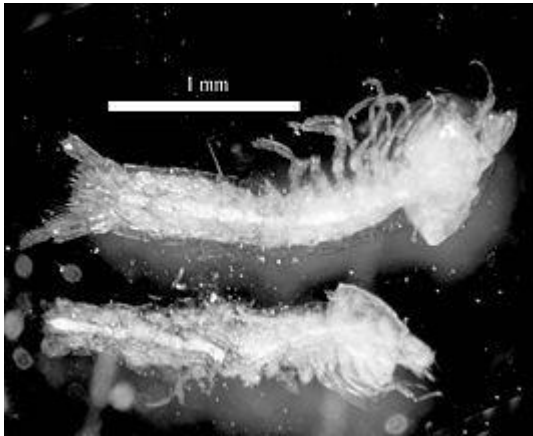
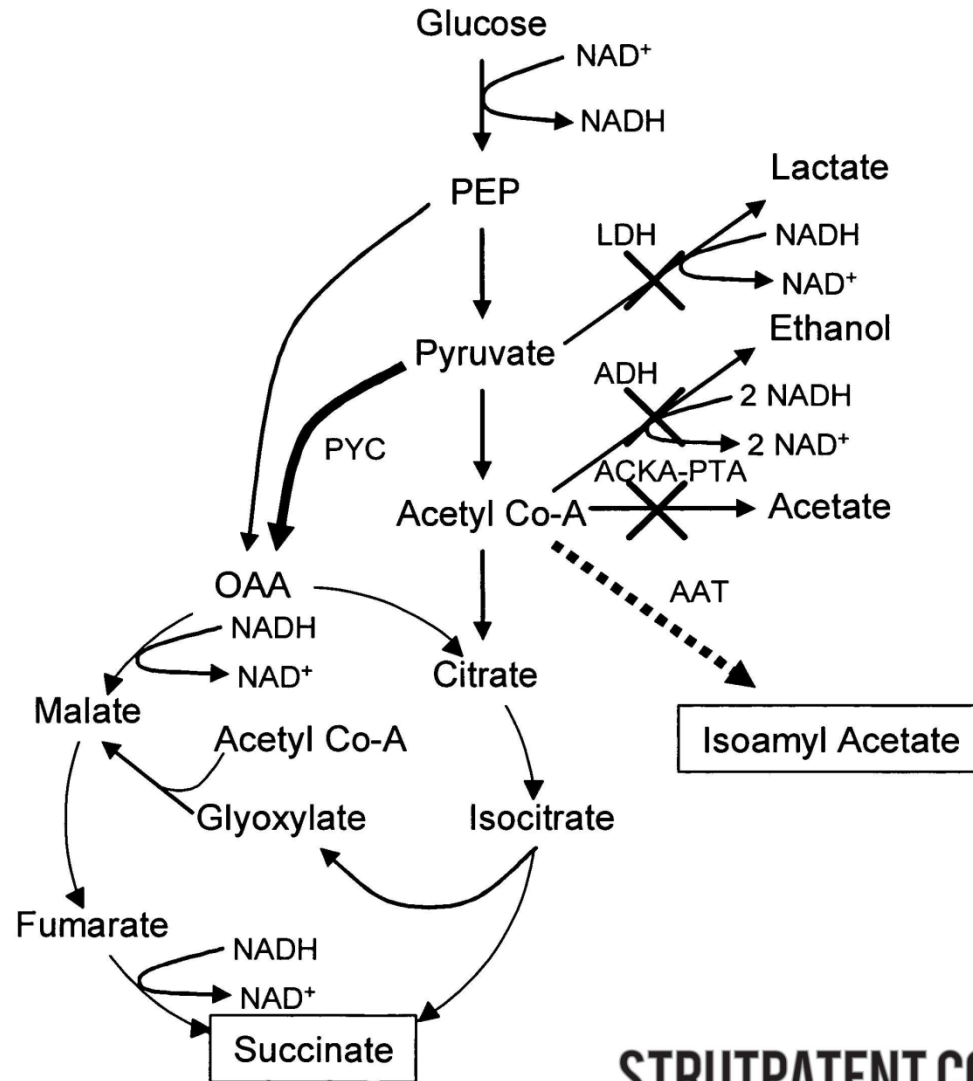
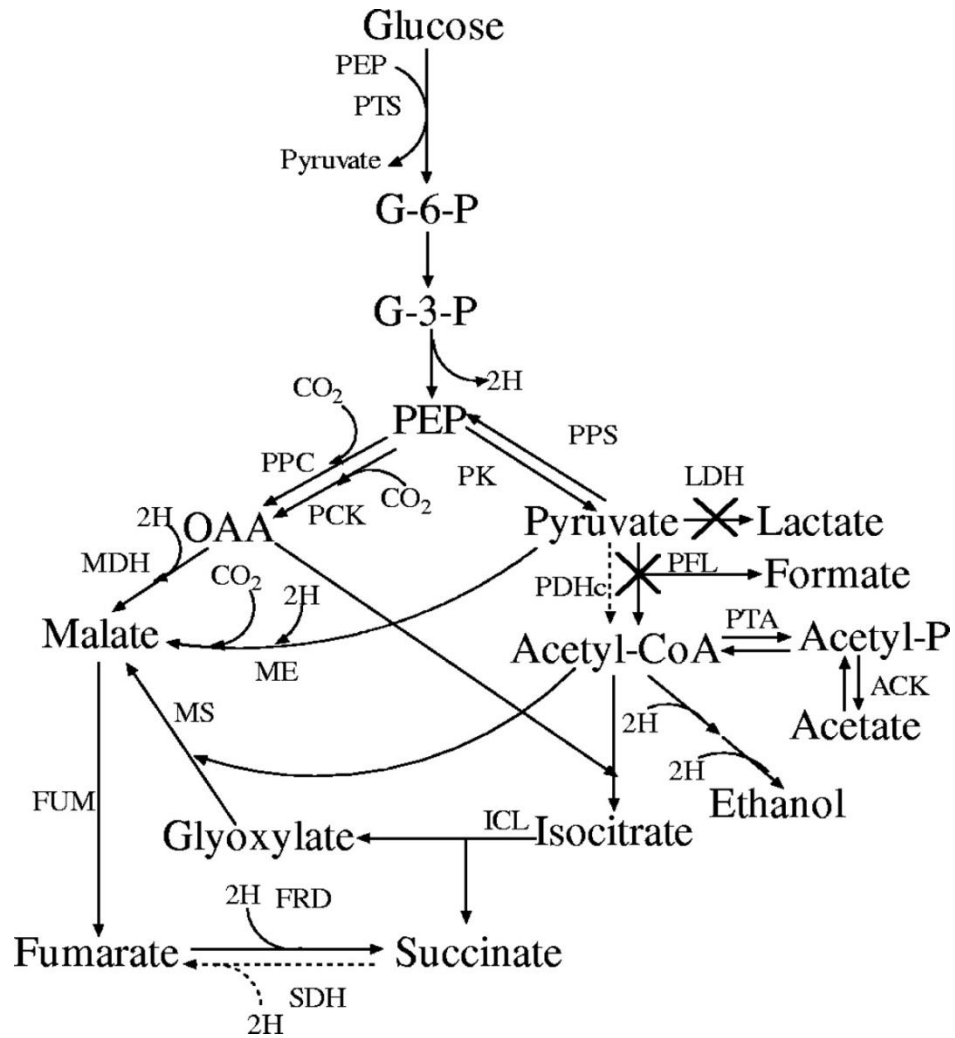


FIG. 1



STRUTPATENT.COM



Děkuji vám za pozornost