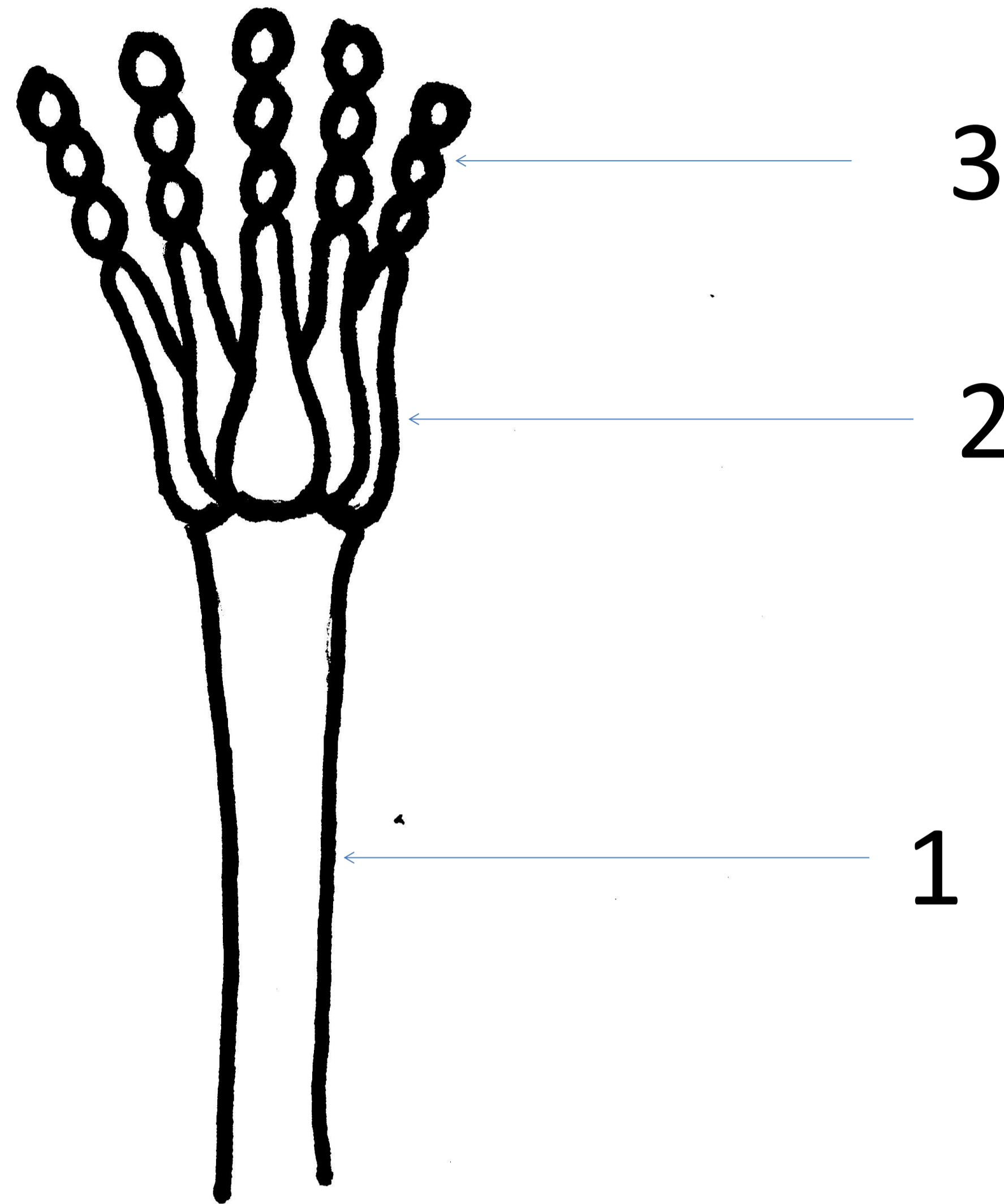
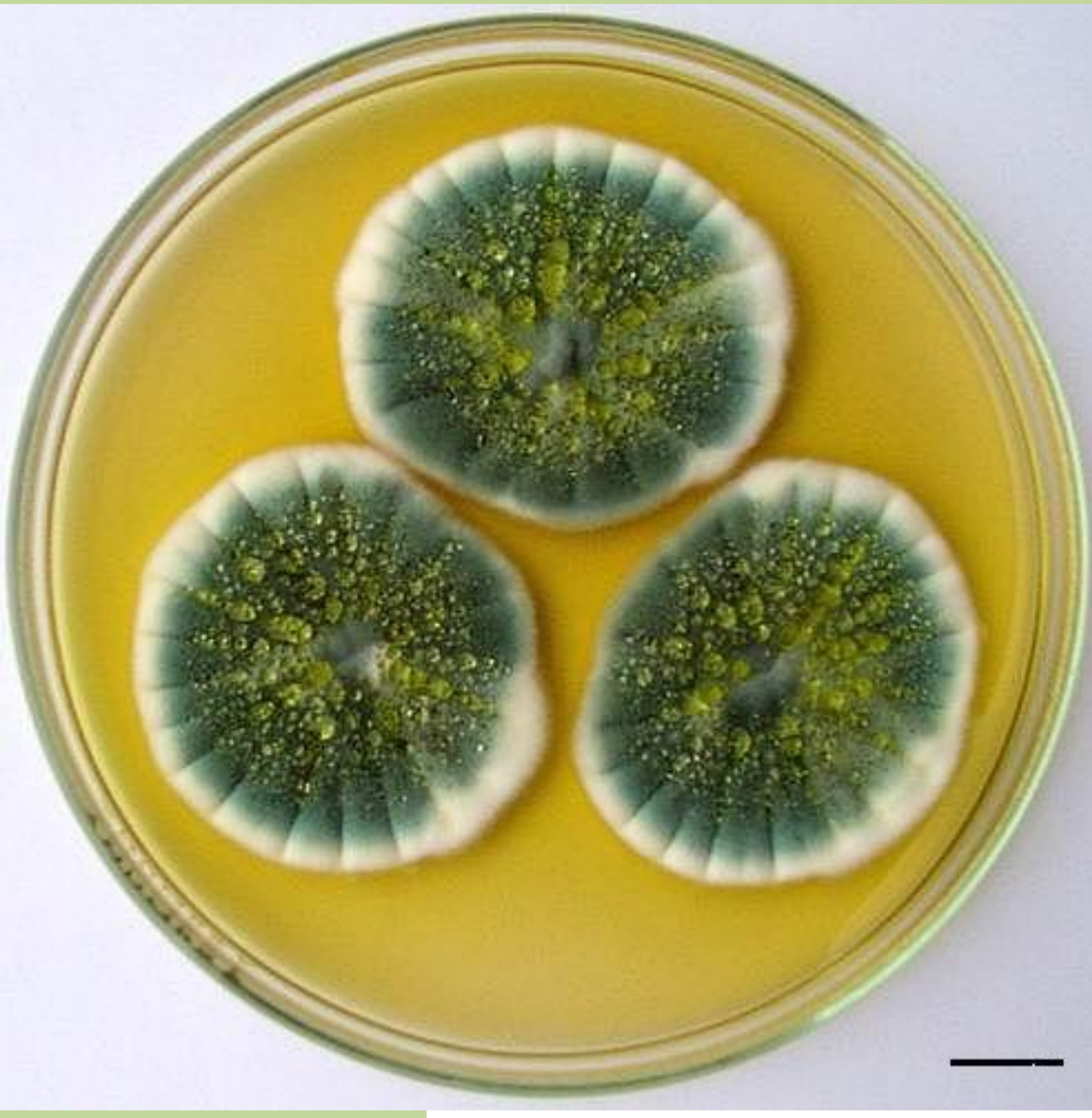
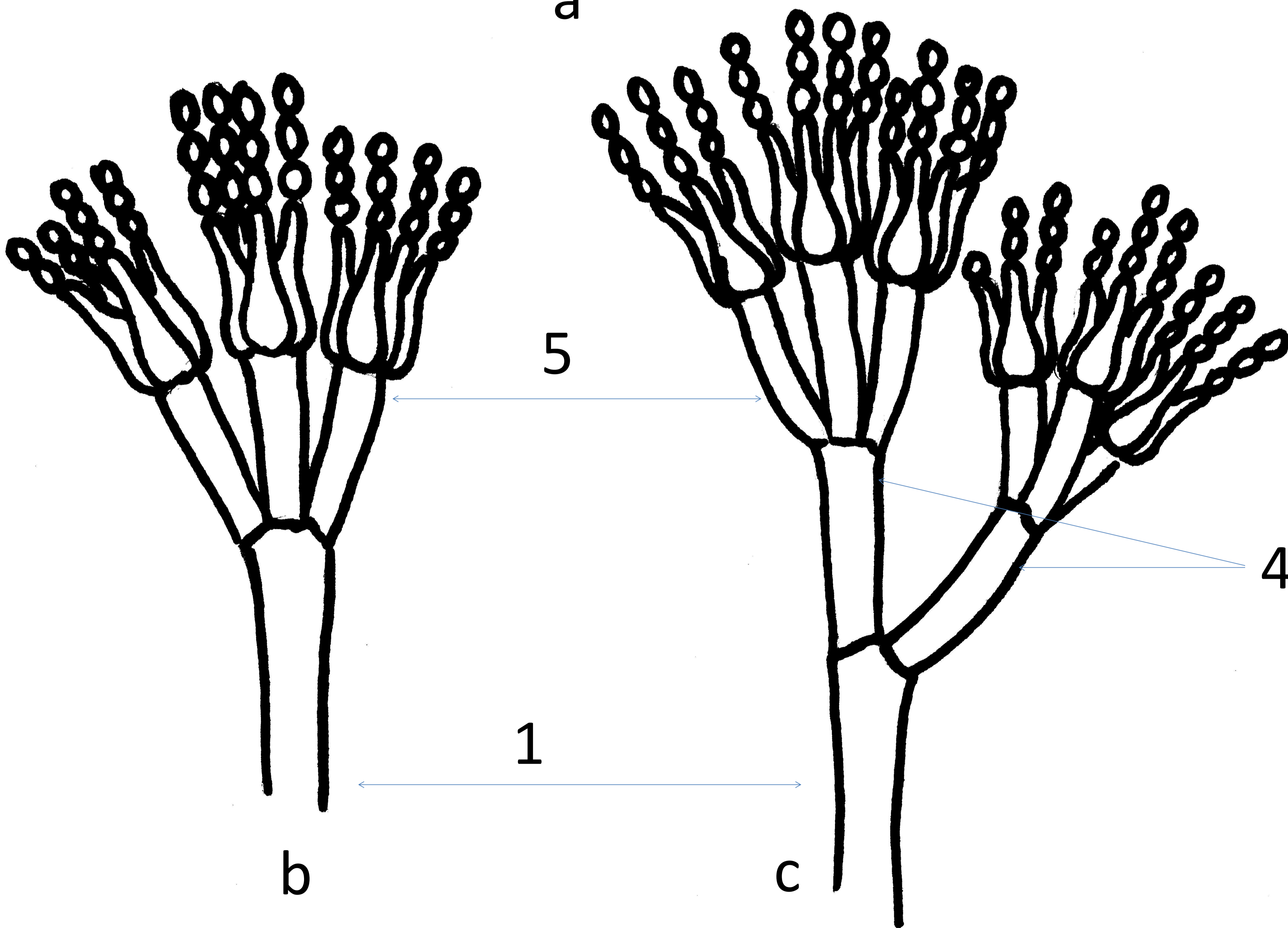


# Rod *Penicillium*

## Charakteristické znaky



a



b

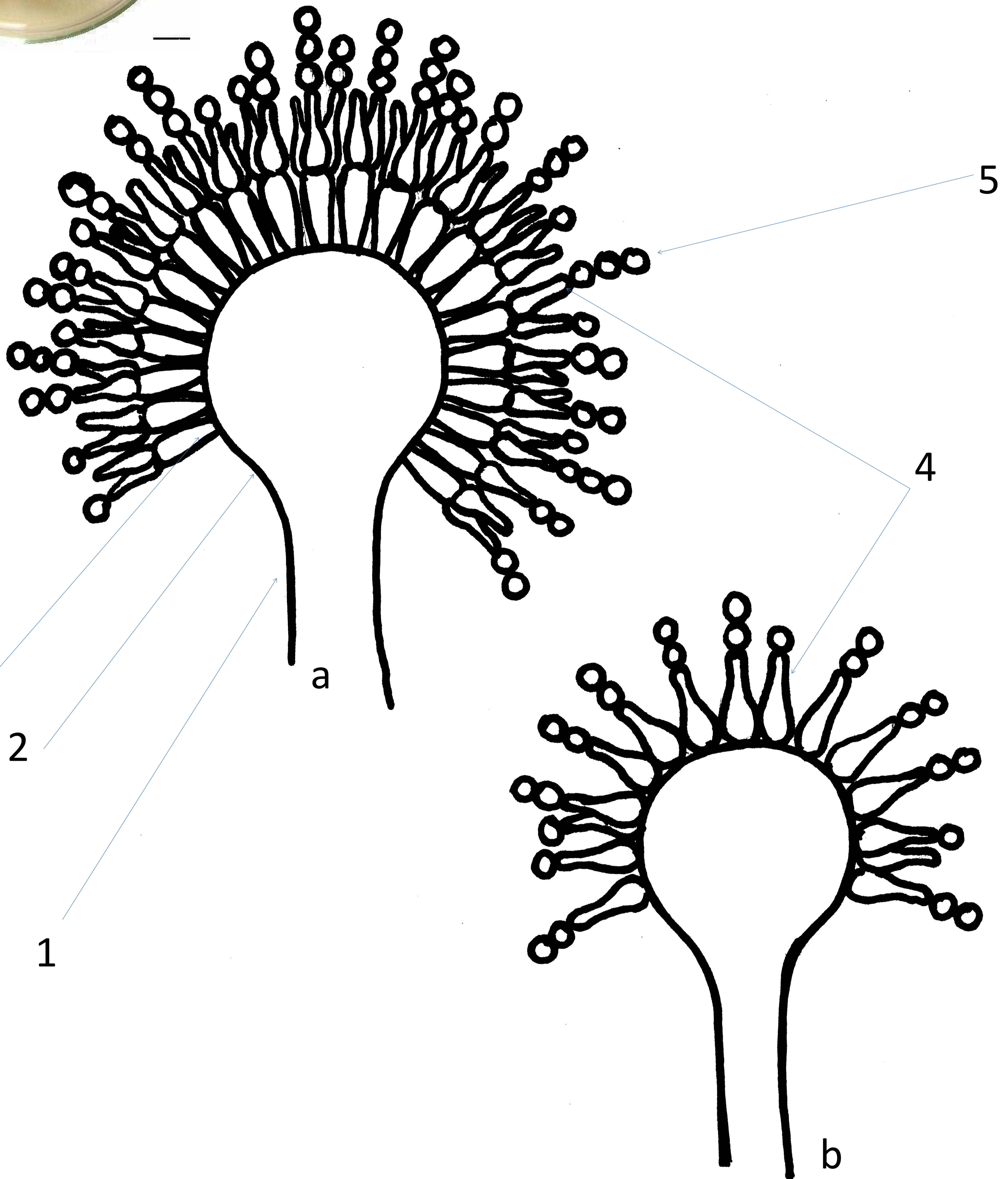
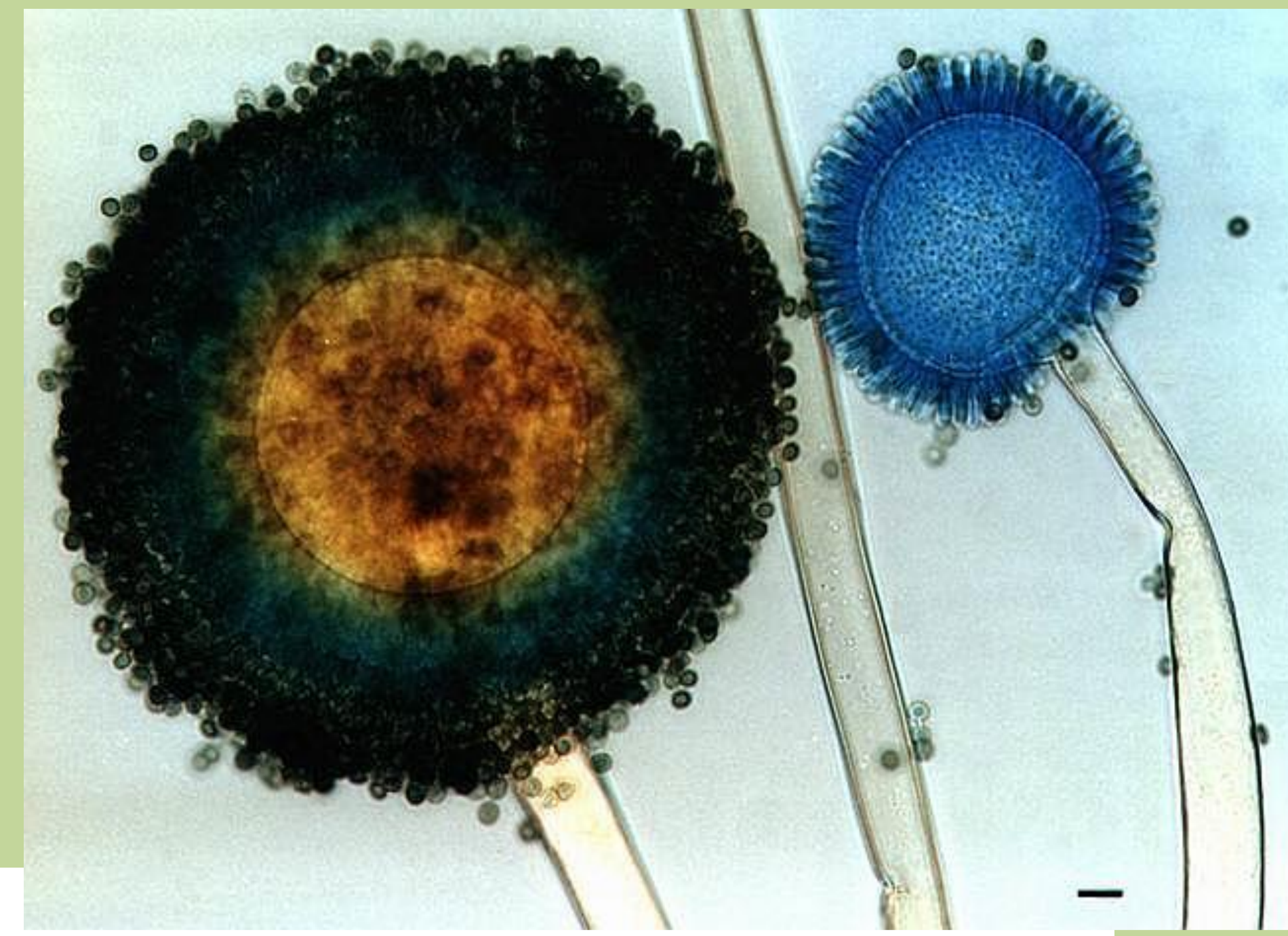
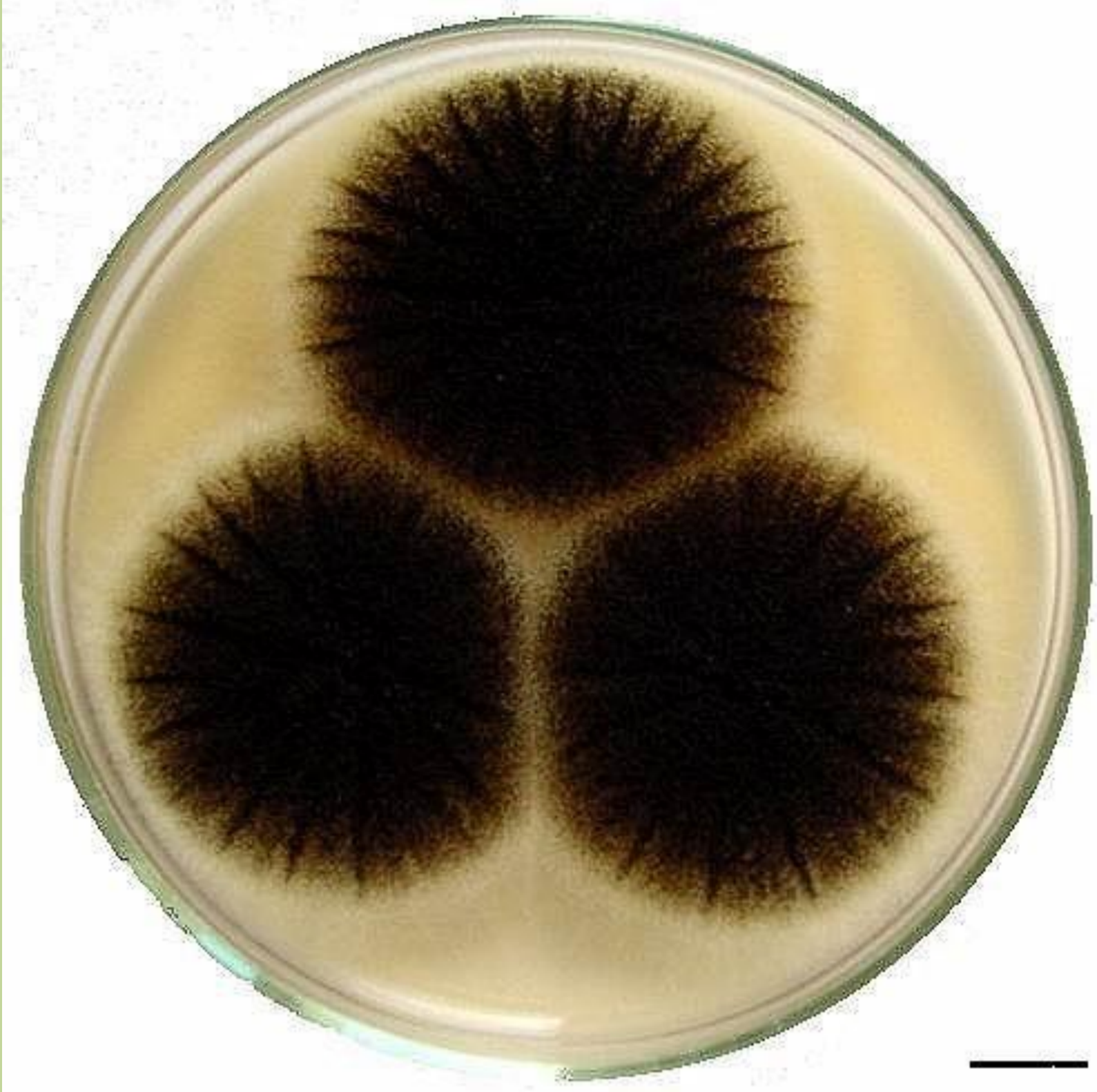
c

Konidiofory: a – monoverticilátní, b – biverticilátní, c – terverticilátní (asymetrický)

Stavba: 1 – konidiofor, 2 – fialidy, 3 – konidie, 4 – větve, 5 - metuly

# Rod *Aspergillus*

## Charakteristické znaky

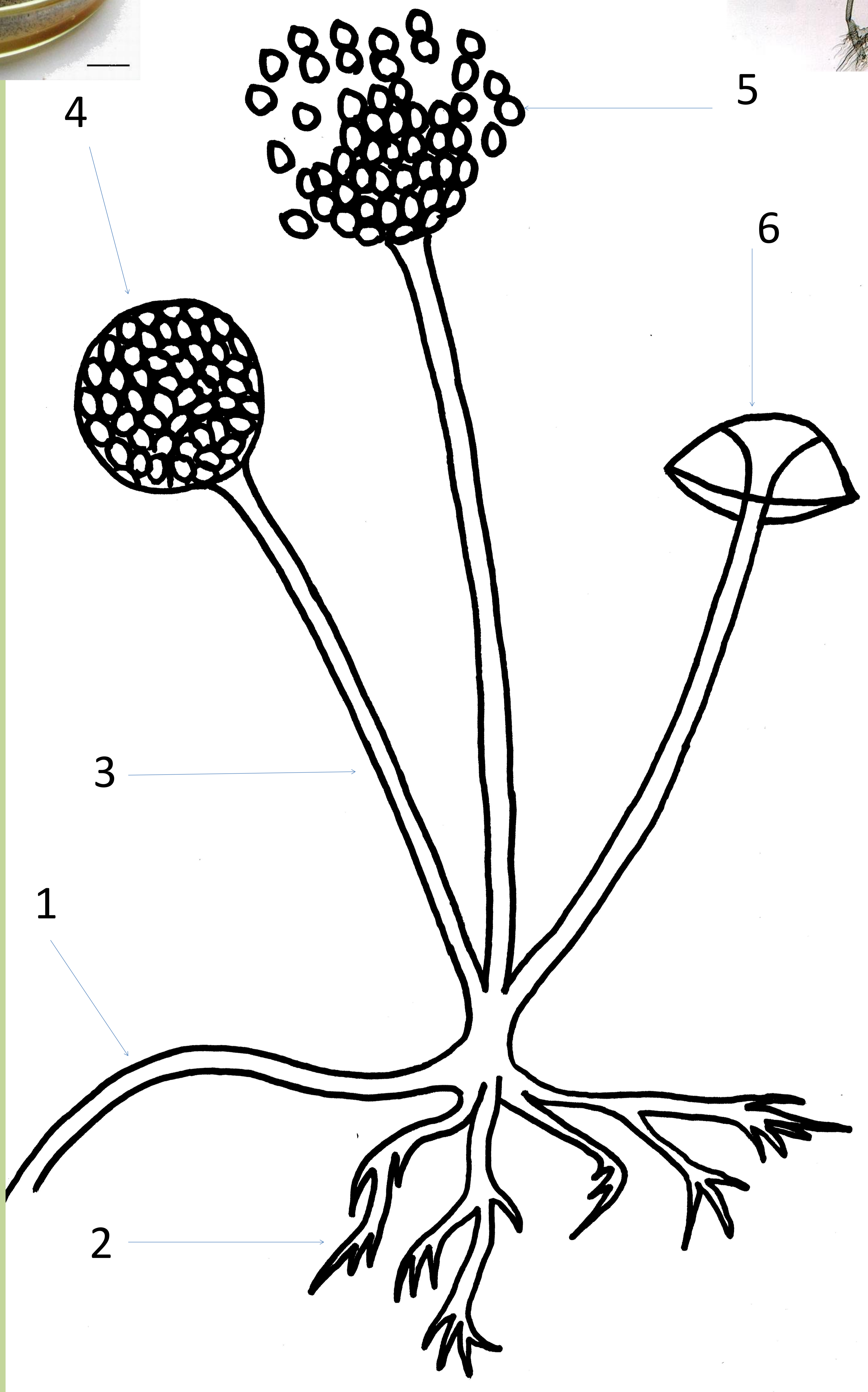


Stavba: 1 – konidiofor, 2 – lůžko (vezikulum), 3 – metuly (a - primární fialidy) 4 – fialidy (a - sekundární fialidy), větve, 5 - konidie



# Rod *Rhizopus*

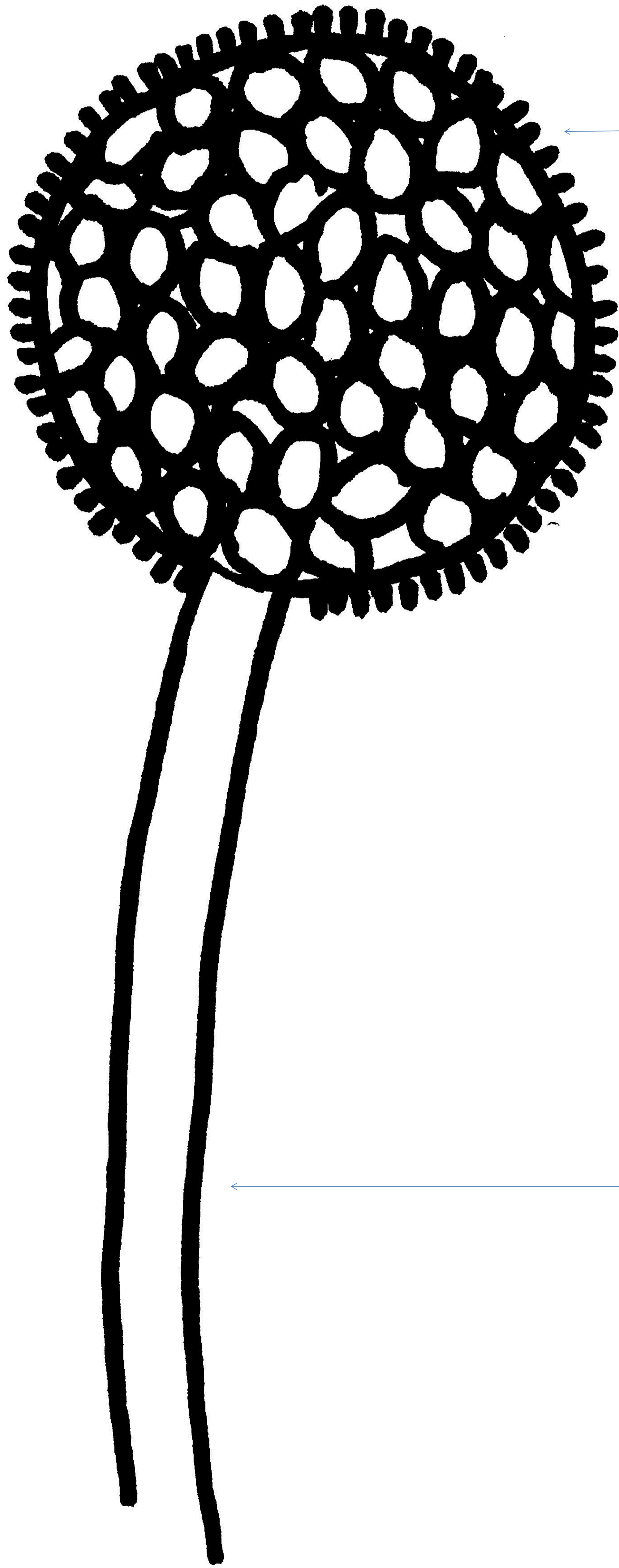
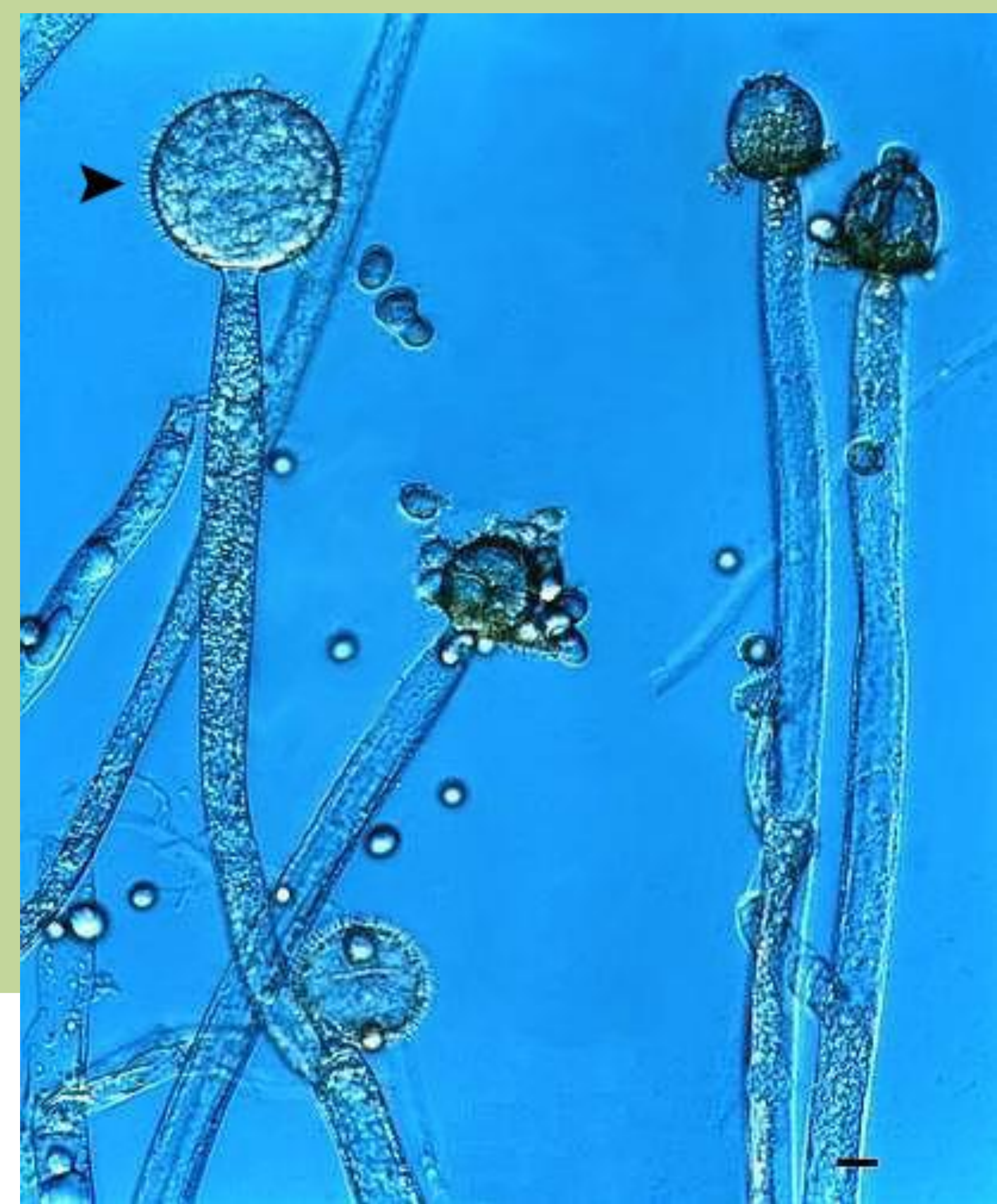
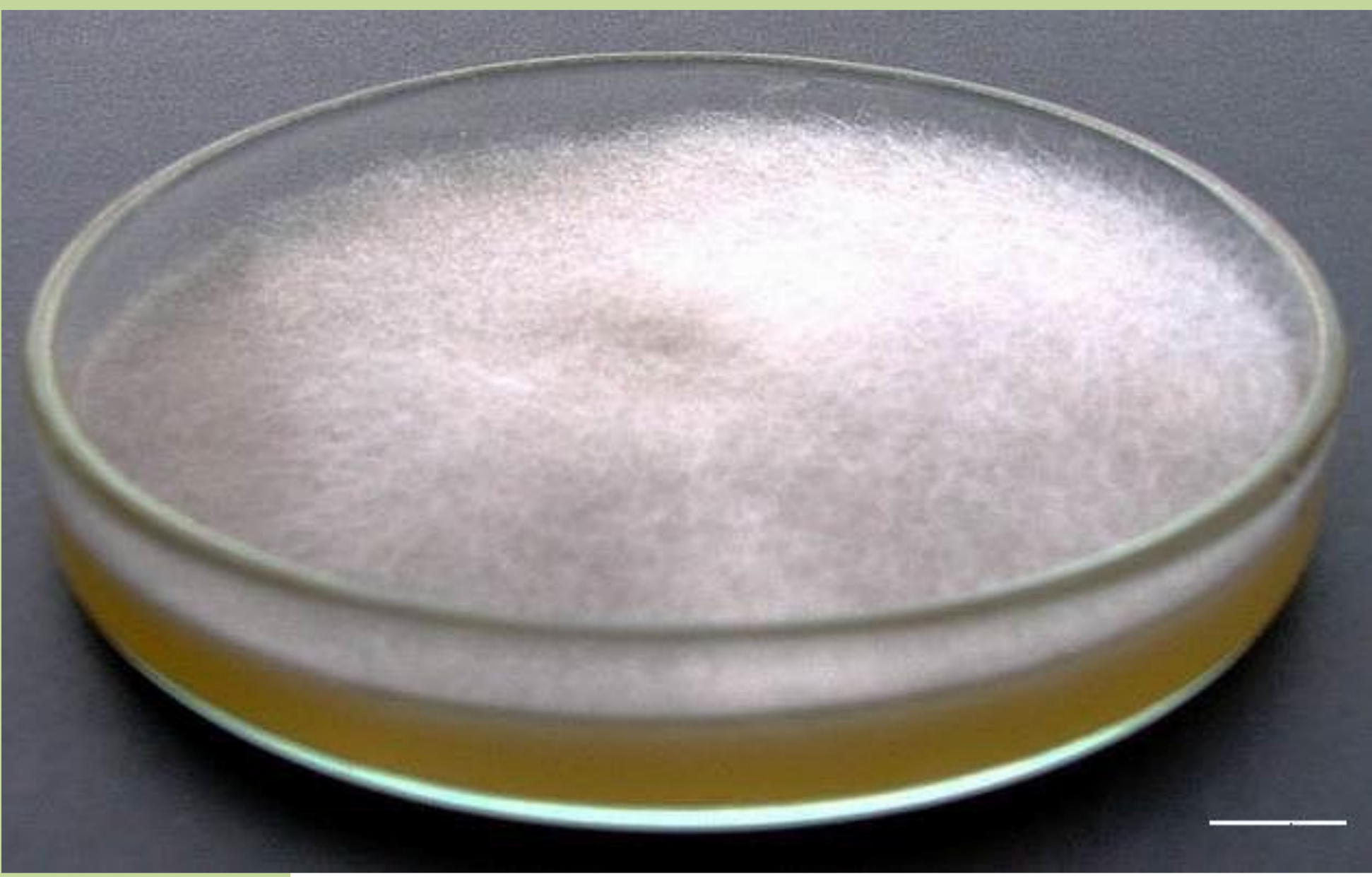
## Charakteristické znaky



Stavba: 1 – stolon, 2 – rhizoidy, 3 – sporangiofor, 4 – sporangium, 5 – sporangiospory, 6 – kloboukovitě obrácená kolumela s apofýzou

# Rod *Mucor*

## Charakteristické znaky



2

3

4

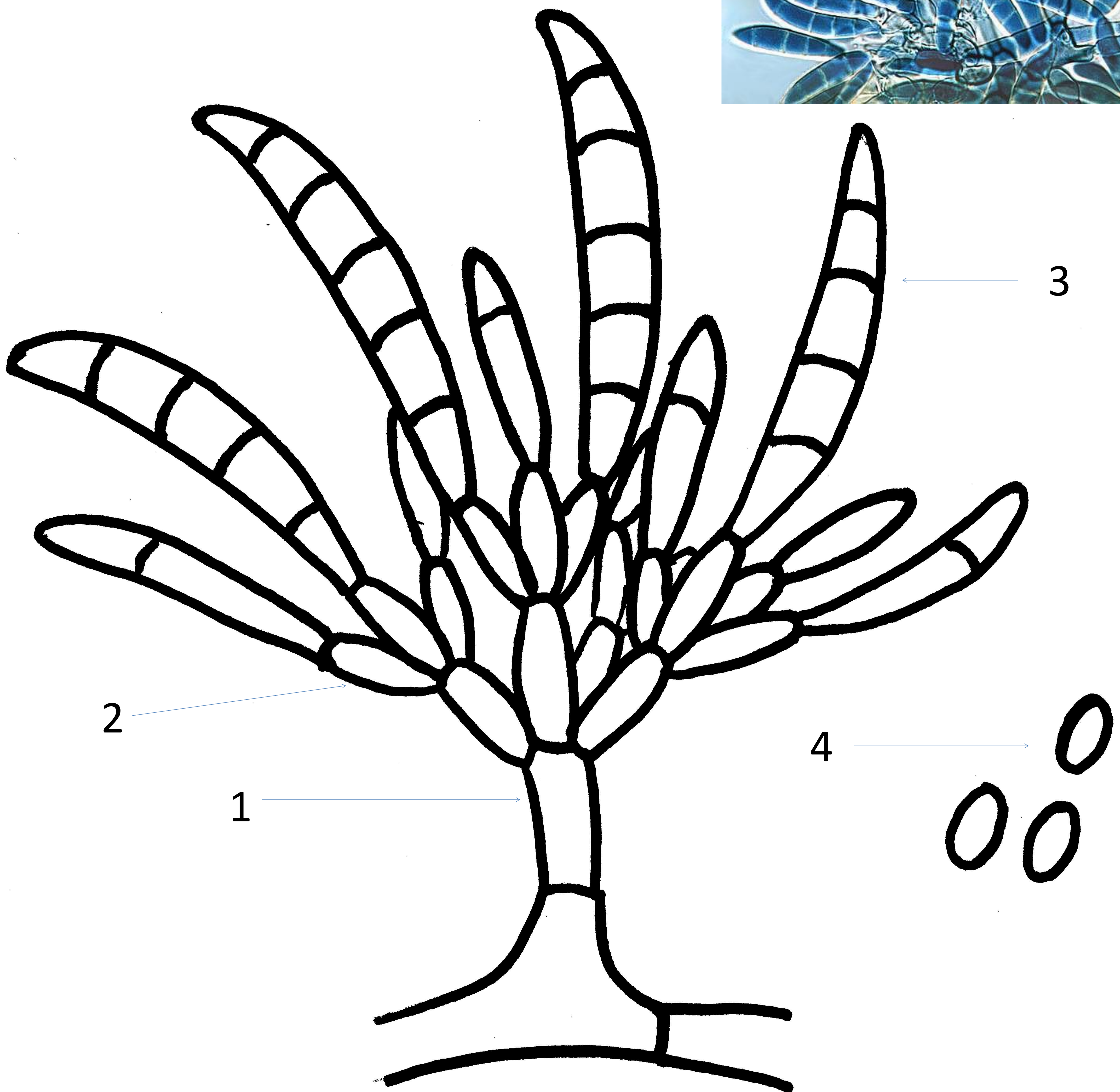
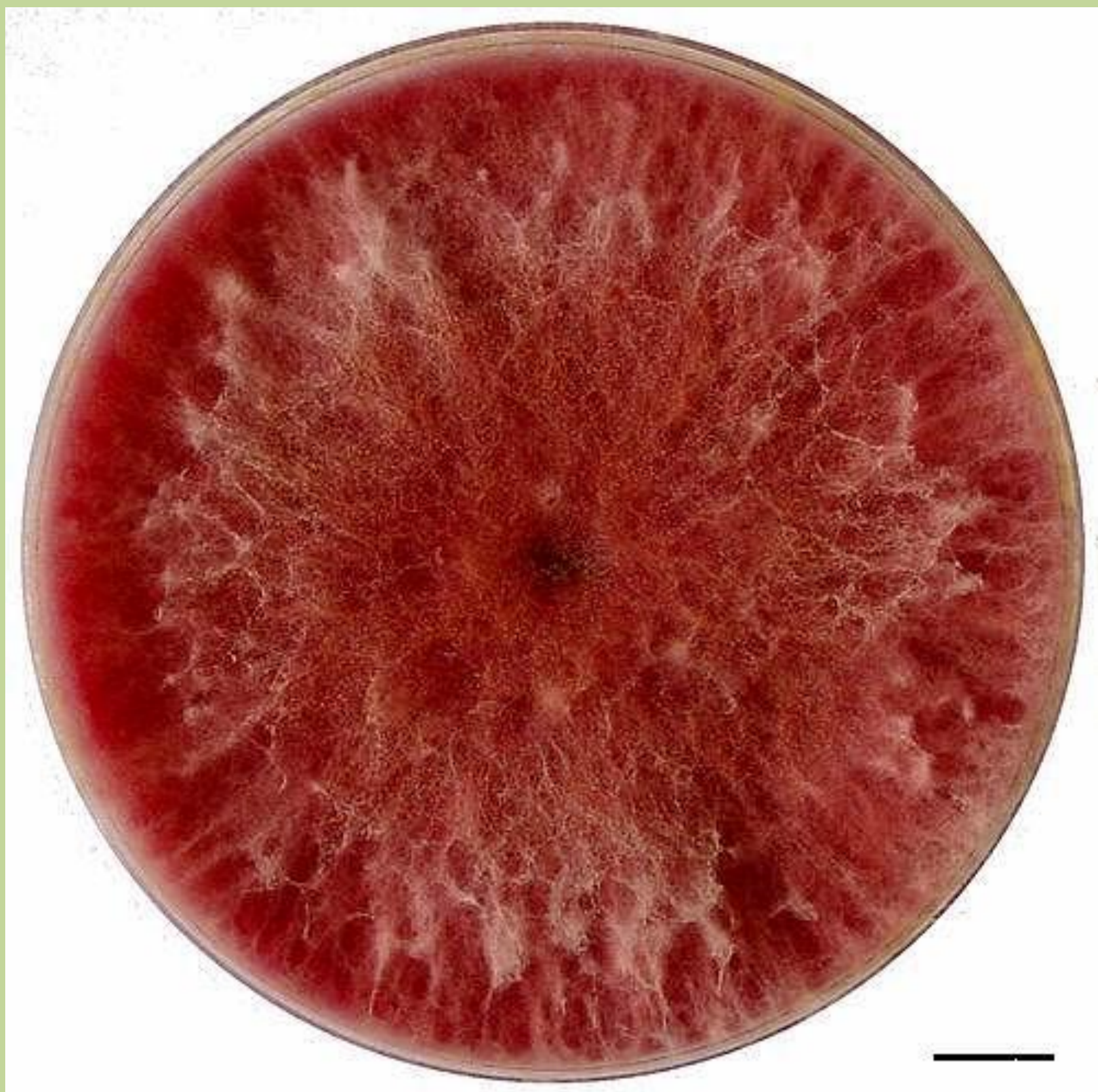
1



Stavba: 1 – sporangiofor, 2 – sporangium, 3 – kolumela, 4 – límeček

# Rod *Fusarium*

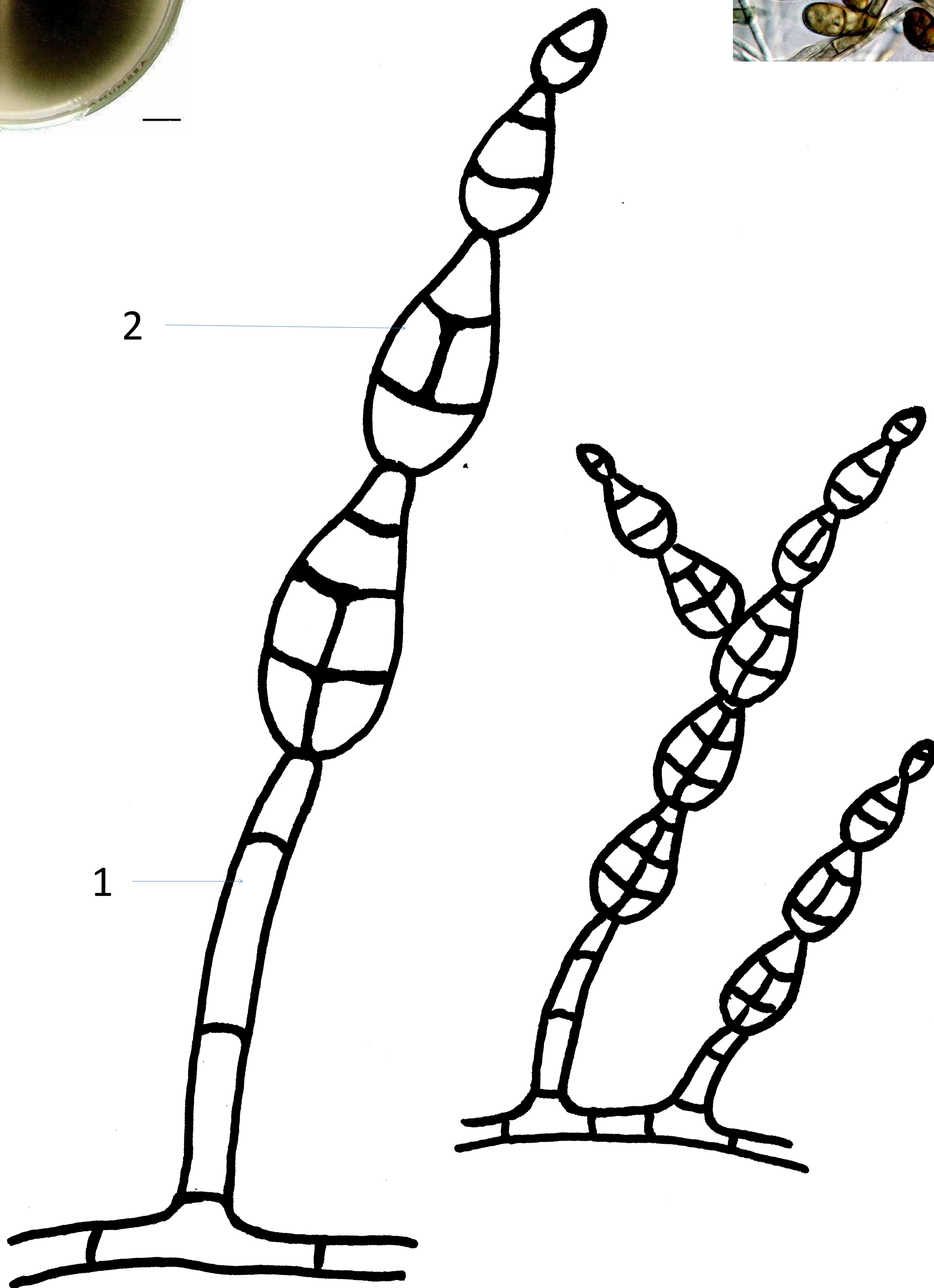
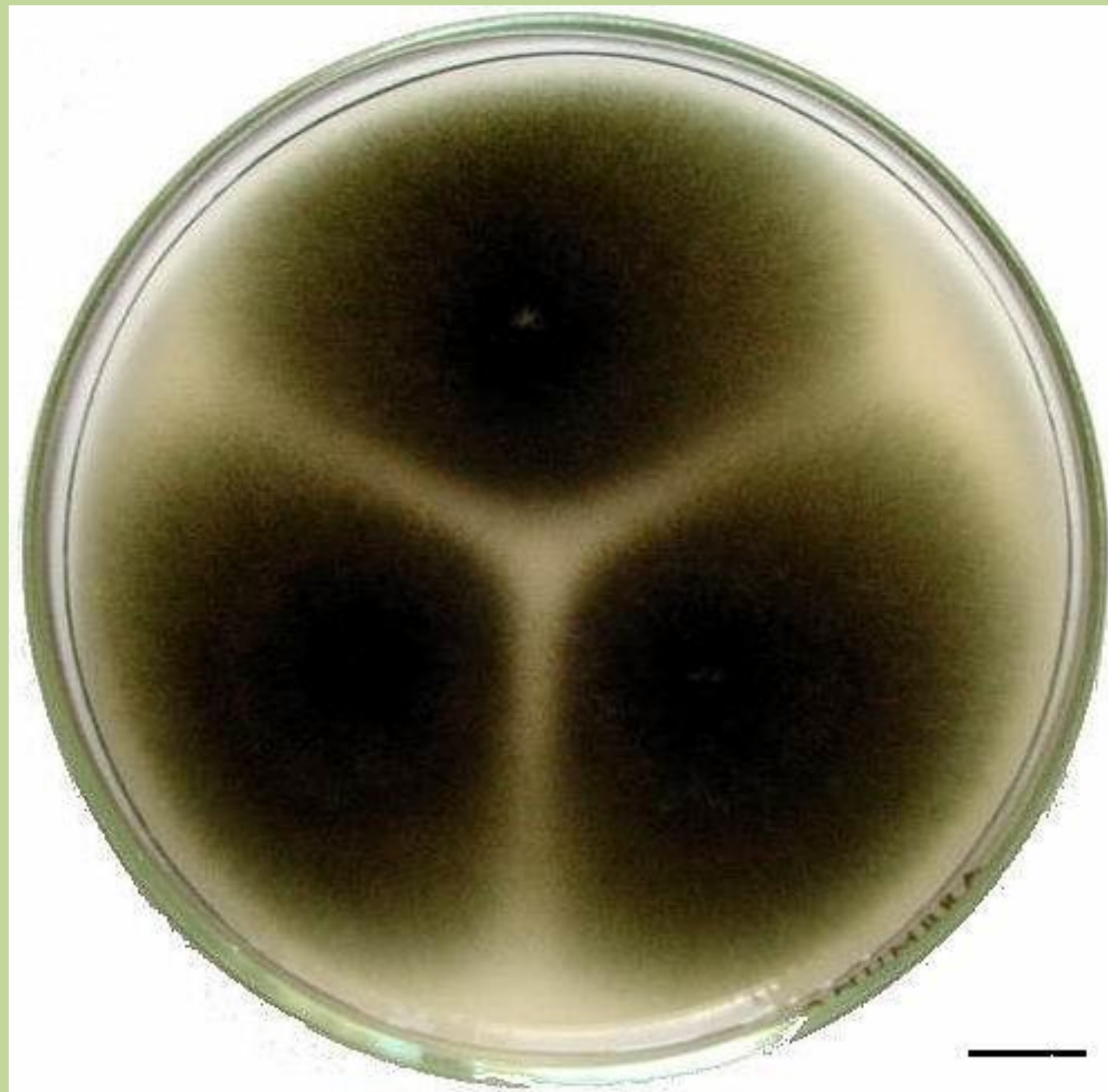
## Charakteristické znaky



Stavba: 1 – konidiofor, 2 – fialidy, 3 – makrokonidie, 4 – mikrokonidie

# Rod *Alternaria*

## Charakteristické znaky



Stavba: 1 – konidiofor, 2 – konidie