

Název:

Automatic electrochemical detection of heavy metals

Školitel:

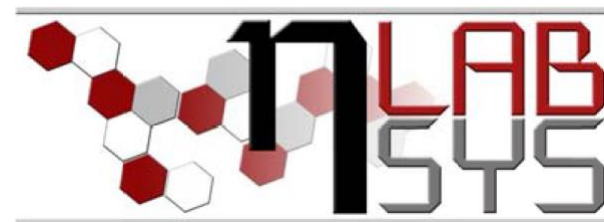
Hoai Viet Nguyen M. Sc., Ing. et Ing. David Hynek, Ph.D.

Datum:

27. 6. 2014

Reg.č.projektu: CZ.1.07/2.3.00/20.0148

Název projektu: Mezinárodní spolupráce v oblasti "in vivo" zobrazovacích technik



HEAVY METALS

- In recent years, there has been an increasing ecological and global public health concern associated with environmental contamination by heavy metals.
- Most environmental contamination and human exposure result from anthropogenic activities such as mining and smelting operations, industrial production and use, and domestic and agricultural use of metals and metal-containing compounds.

Drinking water

Breath

How can heavy metals enter to human body?

Smoking

Food

Automatic electrochemical detection of heavy metals such as Zn, Cd, Pb, and Cu ion by carbon tip electrode.

MATERIALS AND METHODS

The commercial carbon tip modified with mercury film was employed as working electrode in this study by applying a conditioning time of 60 s at -0.9 V into $\text{Hg}(\text{NO}_3)_2$ solution. Ag/AgCl/3M KCl was reference electrode and counter electrode was platinum electrode.

Differential pulse voltammetry (DPV) method was used. Buffer is acetate pH 5.

PC

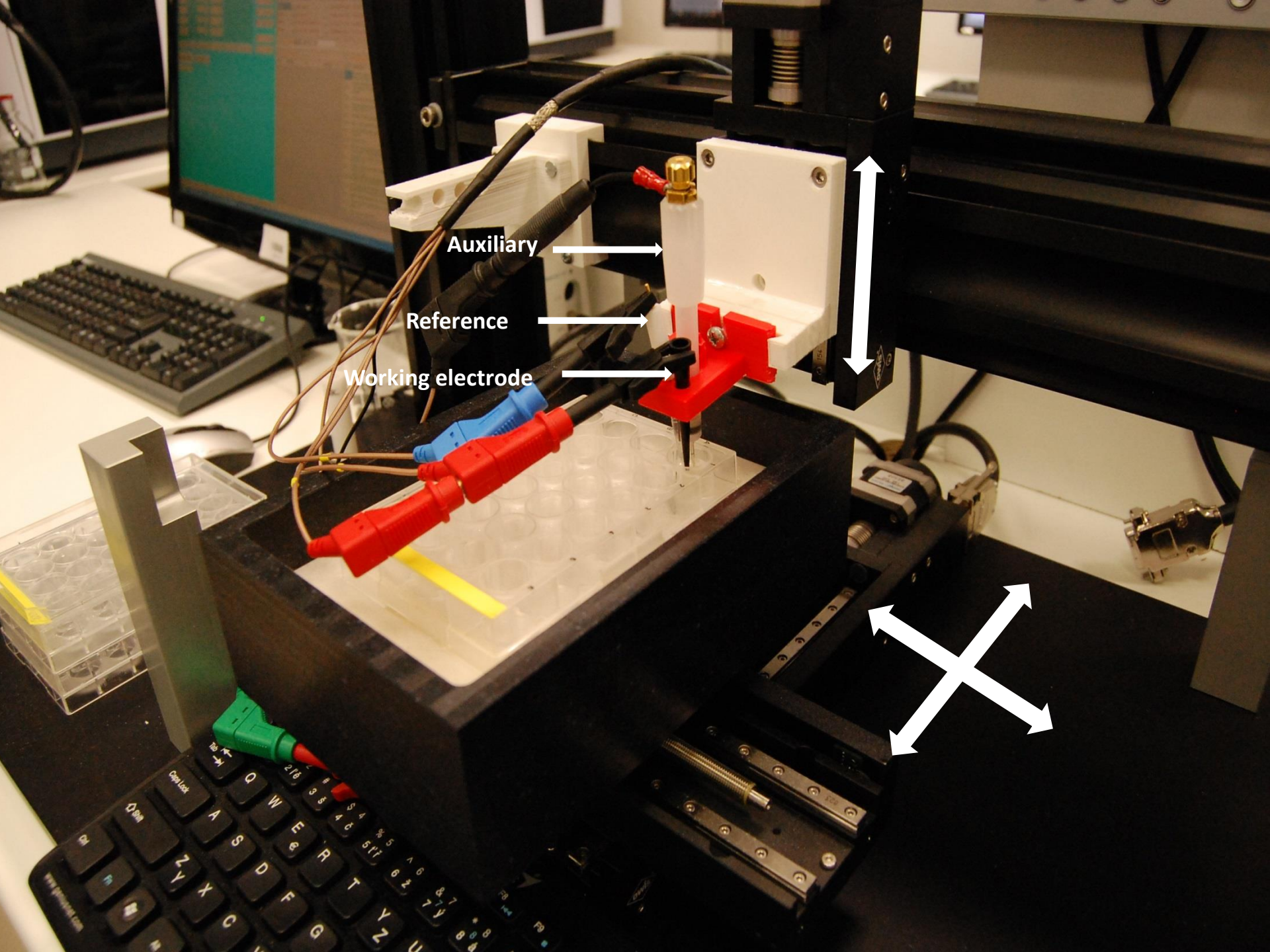


Automatic moving system



3 electrodes

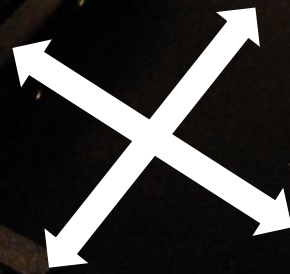




Auxiliary

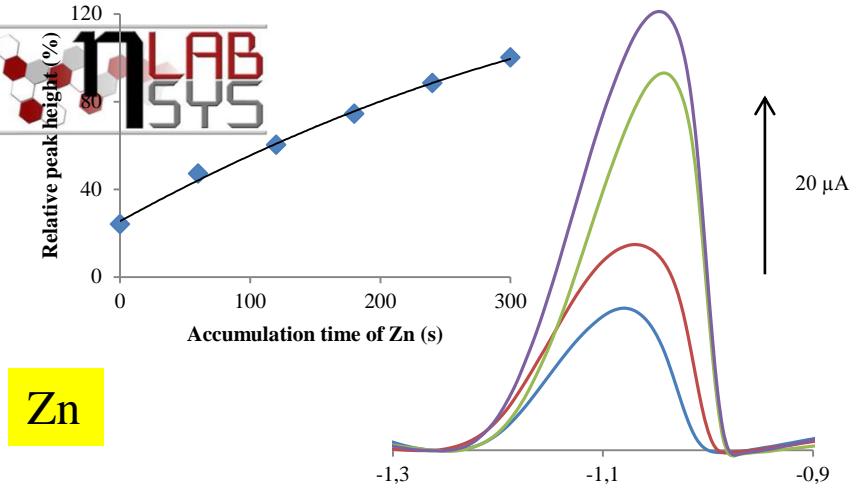
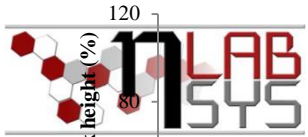
Reference

Working electrode

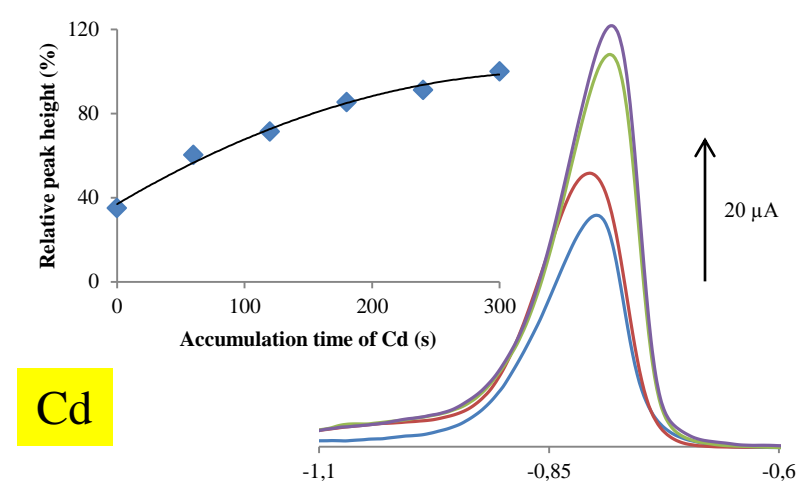


RESULT AND DISCUSSION

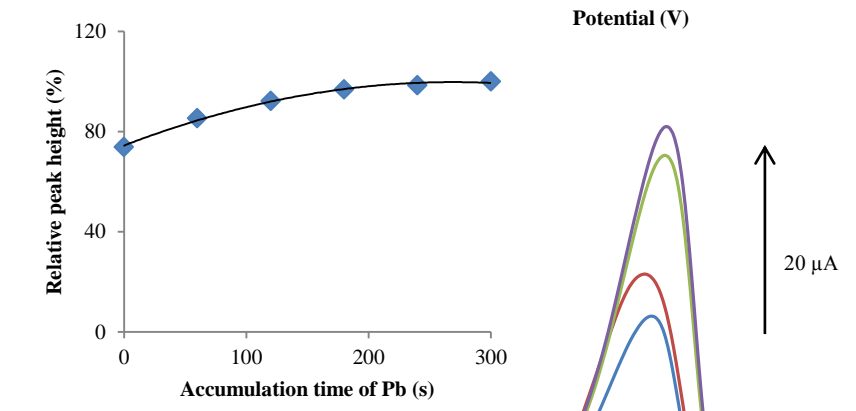
AUTOMATIC ELECTROCHEMICAL DETECTION OF SINGLE HEAVY METAL



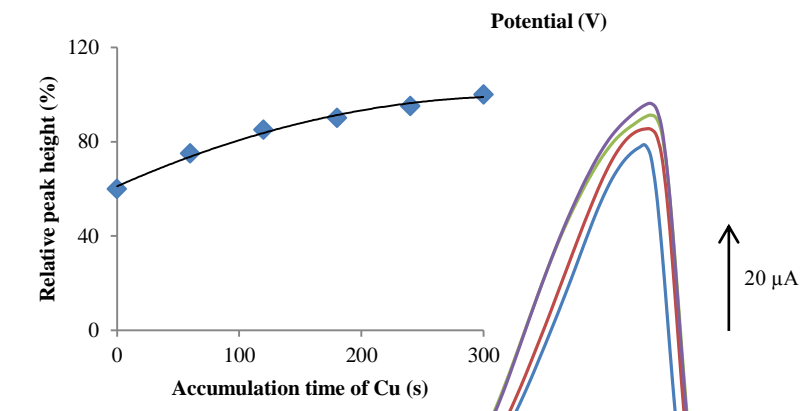
Zn



Cd



Pb



Cu

Fig. 1 Effect of accumulation time (s) on relative peak height of Zn, Cd, Pb, and Cu ion (%). The parameters of DPV were as it follows: concentration of Zn, Cd, Pb, and Cu is 20 $\mu\text{g/ml}$, initial potential -1.6 V, end potential 0.2 V, step potential 0.005, modulation amplitude 0.1 V, modulation time 0.004 s, interval time 0.1 s.

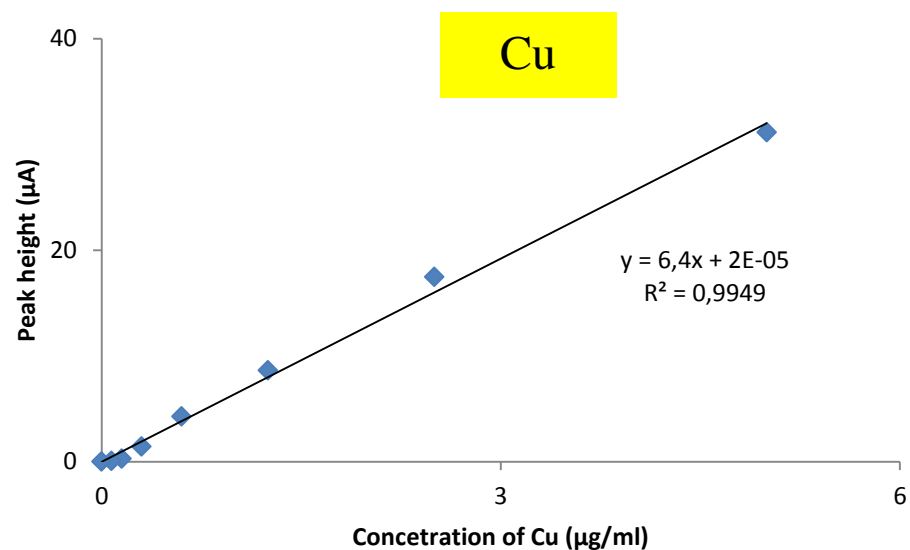
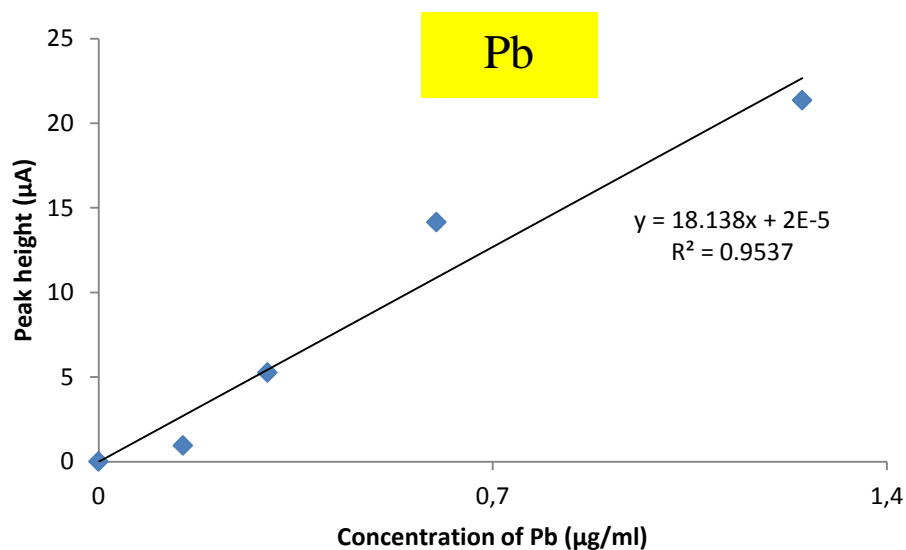
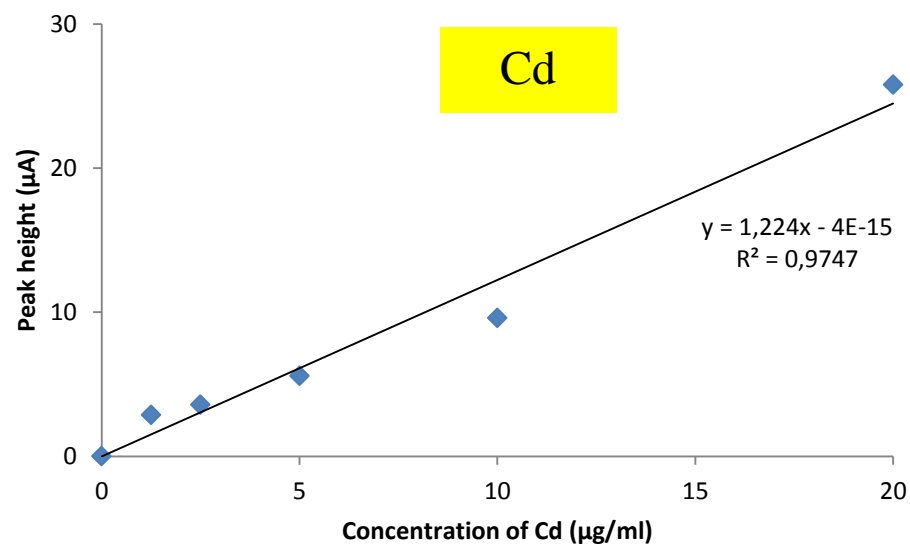
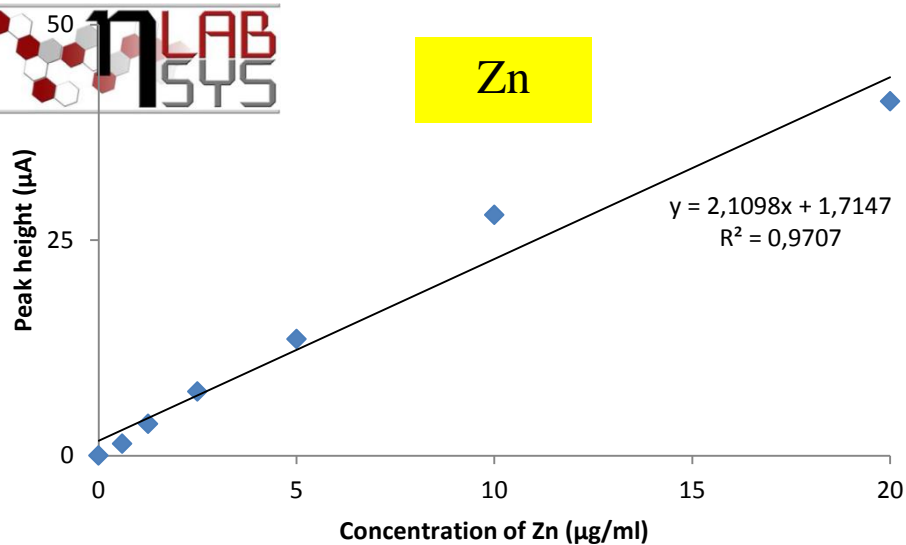


Fig. 2 Calibration curve of Zn, Cd, Pb, and Cu ion. The parameters of DPV were as it follows: accumulation time of 120 s, initial potential -1.6 V, end potential 0.2 V, step potential 0.005, modulation amplitude 0.1 V, modulation time 0.004 s, interval time 0.1 s.

Conclusions

Commercial carbon tip electrode modified with Hg film can be used for detection of heavy metal such as Zn, Cd, Pb or Cu.



Thanks to

Prof. Ing. Rene Kizek PhD

Hynek David, Ing. Ph.D

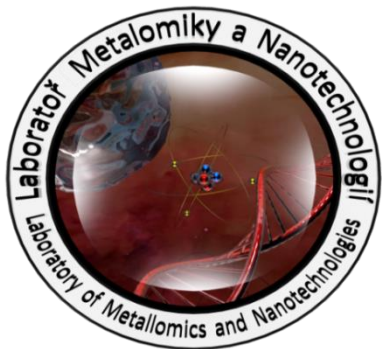
Tmejová Kateřina, Ing. Ph.D

Gumulec Jaromír, MUDr

Nejdl Lukáš, Ing

Zima Lukáš

Zítka Jan



Mendel
University
in Brno



DĚKUJI VÁM ZA POZORNOST.

Laboratoř metalomiky a nanotechnologií



evropský
sociální
fond v ČR



EVROPSKÁ UNIE



MINISTERSTVO ŠKOLSTVÍ,
MLÁDEŽE A TĚLOVÝCHOVY



OP Vzdělávání
pro konkurenceschopnost

INVESTICE DO ROZVOJE VZDĚLÁVÁNÍ